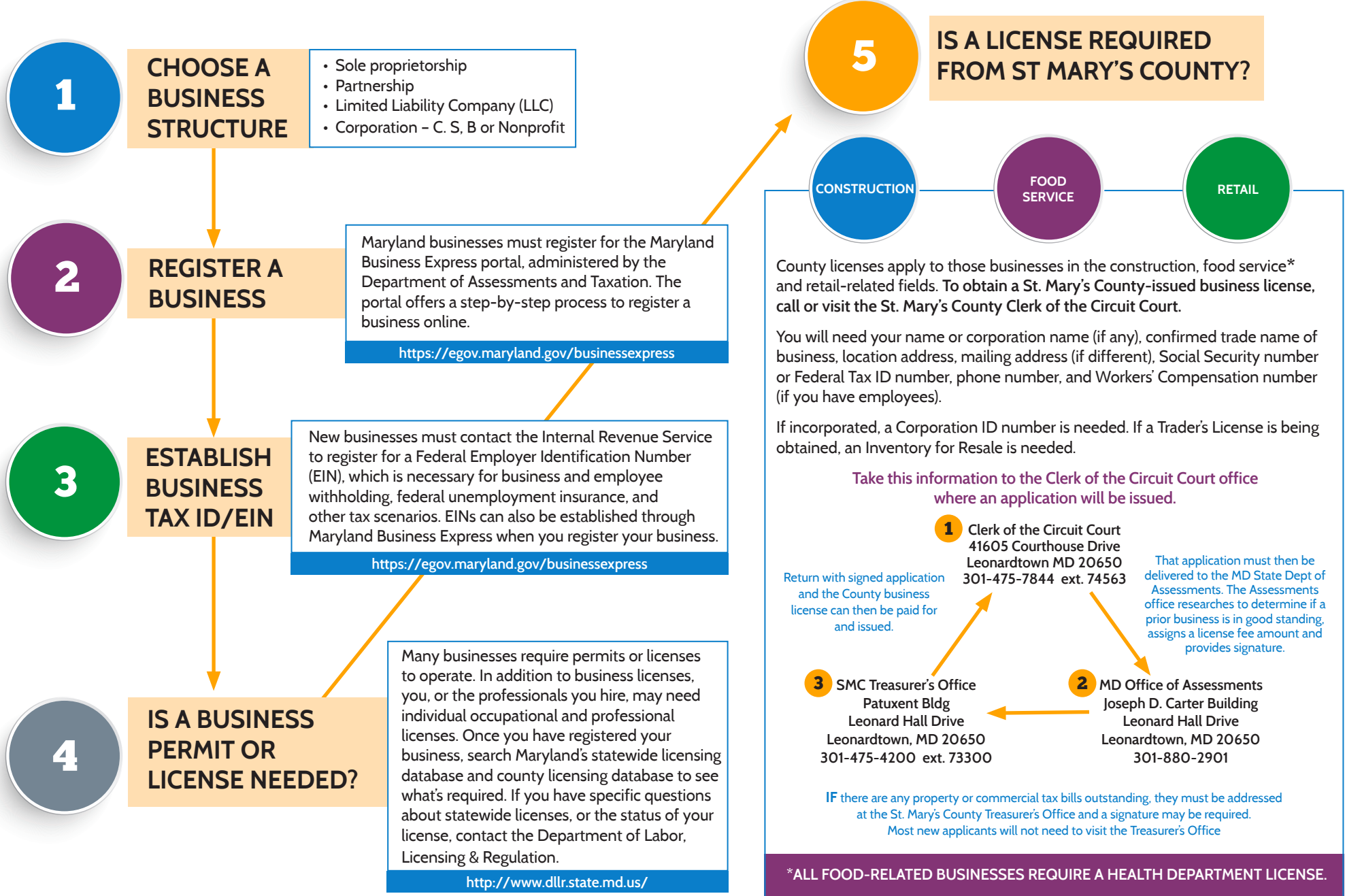


Starting a Business in St Mary's County MD?

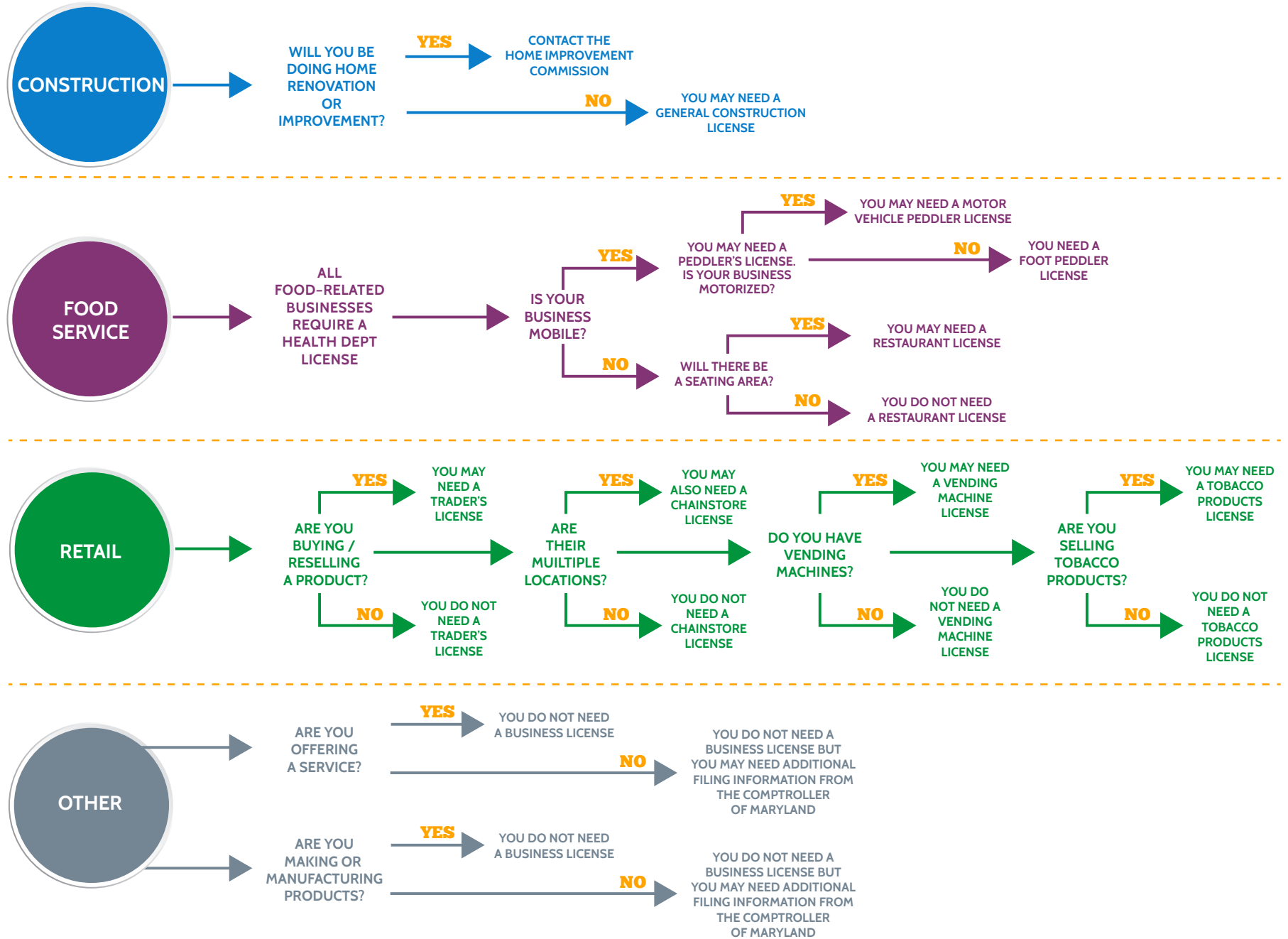
Here are some basic steps that may be required for getting a business started.



NOTE: The information included here is intended to provide an overview of the business licensing process. Specific questions should be directed to the corresponding agencies.

Businesses Requiring St Mary's County-issued Licenses

The Clerk of the Circuit Court will provide you with specific information and direct you through these steps.



NOTE: The information included here is intended to provide an overview of the business licensing process. Specific questions should be directed to the corresponding agencies.