

Title VI Implementation Plan

Title VI of the Civil Rights Act of 1964

St. Mary's Transit System (STS)

FY 2024 - 2026



TABLE OF CONTENTS

PAGE 1

I. Introduction Page 2

II. Overview of Services Page 2

III. Policy Statement and Authorities Page 4

IV. Organization Page 5

V. Overall Title VI Program Responsibilities Page 6

VI. Public Outreach and Involvement Page 11

VII. Environmental Justice Page 12

VIII. APPENDIX

Appendix A – Annual Certifications and Assurances for MTA/FTA ATP FY26

Appendix B – Reporting form for the FY’s 2021-2022 ATP

Appendix C - Title IV Complaint Procedures

Appendix D – Procedures for Receiving and Recording Title VI Complaints

Appendix E – Public Comment Process

Appendix F – STS LEP Plan

I. INTRODUCTION

Title VI of the Civil Rights Act of 1964 prohibits discrimination on the basis of race, color, or national origin in programs and activities receiving Federal financial assistance. Specifically, Title VI provides that "no person in the United States shall, on the ground of race, color, or national origin, be excluded from participation in, be denied the benefits of, or be subjected to discrimination under any program or activity receiving Federal financial assistance." (42 U.S.C. Section 2000d).

The Civil Rights Restoration Act of 1987 clarified the intent of Title VI to include all program and activities of Federal-aid recipients, sub-recipients, and contractors whether those programs and activities are federally funded or not.

Recently, the Federal Transit Administration (FTA) has placed renewed emphasis on Title VI issues, including environmental justice in the transportation planning and programming, and providing meaningful access to persons with Limited English Proficiency.

Recipients of public transportation funding from FTA and the Maryland Department of Transportation Maryland Transit Administration (MDOT MTA) are required to develop policies, programs, and practices that ensure that federal and state transit dollars are used in a manner that is nondiscriminatory as required under Title VI.

This document details how St. Mary's Transit System incorporates nondiscrimination policies and practices in providing services to the public.

II. OVERVIEW OF SERVICES

St. Mary's Transit System (STS) is funded through operating and capital grants administered by the State and Federal Transit Administration through St. Mary's County Department of Public Works and Transportation under St. Mary's County Government. STS offices are located at the St. Andrews Maintenance Facility at 44829 St. Andrews Church Road, California Maryland. The St. Mary's County Department of Public Works and Transportation provides administrative support and supervision. One Deputy Director, one Transportation Supervisor, one Assistant Supervisor, one Transportation Specialist/Trainer, two Lead Dispatchers, two Dispatchers Thirty (30) drivers with benefits packages, and ten (10) hourly part time drivers. The transit system operates seven days a week. All STS vehicles are stationed, maintained and fueled at the above-mentioned department's facility.

STS provides public transportation services within St. Mary's County, connecting with Charles County's VanGO in Charlotte Hall, and Calvert County's Transit System in Solomon's Island, serving many primary destinations including St. Mary's Hospital, St. Mary's College, College of Southern Maryland, employment locations, medical facilities, and shopping centers throughout the county.

STS fixed routes operate Monday through Saturday from 5 a.m. to 9 p.m. on an hourly or every other hour schedule. Two fixed routes are offered; one in the California/Great Mills area and the other in Leonardtown on Sundays 6 am to 8 pm and is supported by the Department of Social Services and local funding.

STS transportation services are provided from Charlotte Hall, Mechanicsville, Oakville, Loveville, Leonardtown, Callaway, California, Lexington Park, Great Mills, Ridge, to St. Mary's City and connect with Charles County's VanGO in Charlotte Hall, and Calvert County's Transit System in both Charlotte Hall and Solomon's Island. The STS continuous routes provide seamless transportation throughout the county. Flag stops are permitted along the routes in safe locations. Bike racks are available on many STS buses, and bikes are permitted in any available wheelchair space. Riders are responsible for securing their own bike.

ADA demand response services provide service to persons with disabilities who are unable to access regular public transportation fixed route services. These demand response services coincide with the current public transportation routes and schedule. The ADA trips provided are reserved by contacting the STS office. STS currently schedules 9 drivers daily to accommodate scheduled ADA appointments. STS deviates routes $\frac{3}{4}$ of a mile from a regular public transportation route to accommodate the trips. Persons with disabilities follow a certification process in order to qualify for ADA transportation. ADA Program brochures are available to clients upon request.

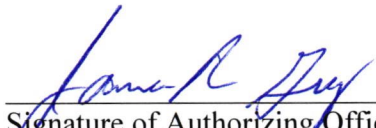
STS provides transportation services to the elderly and persons with disabilities outside the $\frac{3}{4}$ mile through the State Specialized Transportation Assistance Program (SSTAP). SSTAP clients are transported by zones, designated by the day of the week and may travel between the hours of 10am and 1pm. SSTAP Program brochures are available to clients upon request and on the website.

III. POLICY STATEMENT AND AUTHORITIES

Title VI Policy Statement

St. Mary's Transit System is committed to ensuring that no person shall, on the grounds of race, color, national origin, as provided by Title VI of the Civil Rights Act of 1964 and the Civil Rights Restoration Act of 1987 (PL 100.259), be excluded from participation in, be denied the benefits of, or be otherwise subjected to discrimination under any program or activity, whether those programs and activities are federally funded or not.

St. Mary's Transit System's Title VI Manager is responsible for initiating and monitoring Title VI activities, preparing required reports, and other responsibilities as required by Title 23 Code of Federal Regulations (CFR) Part 200, and Title 49 CFR Part 21.



Signature of Authorizing Official
Commissioner President

3-24-24

Date

Authorities

Title VI of the 1964 Civil Rights Act provides that no person in the United States shall, on the grounds of race, color, national origin, or sex, be excluded from participation in, be denied the benefits of, or be otherwise subjected to discrimination under any program or activity receiving federal financial assistance (refer to 49 CFR Part 21). The Civil Rights Restoration Act of 1987 broadened the scope of Title VI coverage by expanding the definition of the terms "programs or activities" to include all programs or activities of Federal Aid recipients, sub recipients, and contractors, whether such programs and activities are federally assisted or not.

Additional authorities and citations include: Title VI of the Civil Rights Act of 1964 (42 U.S.C. Section 2000d); Federal Transit Laws, as amended (49 U.S.C. Chapter 53 et seq.); Uniform Relocation Assistance and Real Property Acquisition Policies Act of 1970, as amended (42 U.S.C. 4601, et seq.); Department of Justice regulation, 28 CFR part 42, Subpart F, "Coordination of Enforcement of Nondiscrimination in Federally-Assisted Programs" (December 1, 1976, unless otherwise noted); U.S. DOT regulation, 49 CFR part 21, "Nondiscrimination in Federally-Assisted Programs of the Department of Transportation—Effectuation of Title VI of the Civil Rights Act of 1964" (June 18, 1970, unless otherwise noted); Joint FTA/Federal Highway Administration (FHWA) regulation, 23 CFR part 771, "Environmental Impact and Related Procedures" (August 28, 1987); Joint FTA/FHWA regulation, 23 CFR part 450 and 49 CFR part 613, "Planning Assistance and Standards," (October 28, 1993, unless otherwise noted); U.S. DOT Order 5610.2, "U.S. DOT Order on Environmental Justice to Address Environmental Justice in Minority Populations and Low-Income Populations," (April 15, 1997); U.S. DOT Policy Guidance Concerning Recipients'

Responsibilities to Limited English Proficient Persons, (December 14, 2005), and Section 12 of FTA's Master Agreement, FTA MA 13 (October 1, 2006).

Annual Nondiscrimination Assurance to MTA

As part of the Certifications and Assurances submitted each year to the MDOT MTA with the Annual Transportation Plan (ATP, the public transportation grant application) and all Federal Transit Administration grants submitted to the MDOT MTA, St. Mary's Transit System submits a Nondiscrimination Assurance which addresses compliance with Title VI as well as nondiscrimination in hiring (EEO) and contracting (DBE), and nondiscrimination on the basis of disability (ADA).

The assurance for FY's 2021-2022 is attached as Appendix A. In signing and submitting this assurance, St. Mary's Transit System confirms to MDOT MTA the agency's commitment to nondiscrimination and compliance with federal and state requirements.

IV. ORGANIZATION

Under the authority of the St. Mary's Transit System's Commissioners of St. Mary's County, the Title VI Manager is responsible for ensuring implementation of the agency's Title VI program. Title VI program elements are interrelated and responsibilities may overlap. The specific areas of responsibility have been delineated below for purposes of clarity.

Note that Grantees that provide service to geographic areas with a population of 200,000 or greater (under 49 U.S.C. 5307) have additional program-specific requirements which are included in this model.

- The Title VI Manager is responsible for coordinating the overall administration of the Title VI program, plan, and assurances, including complaint handling, data collection and reporting, annual review and updates, and internal education. Those responsible for overall administration coordinate with those responsible for public outreach and involvement and service planning and delivery.
- STS Supervisor and Deputy Director are responsible for public outreach and involvement. This includes development and implementation of the Limited English Proficiency (LEP) plan. Those responsible for this area also coordinate with those who are responsible for service planning and delivery.
- STS Supervisor and Deputy Director are responsible for service planning and delivery. This includes analysis of current services, analysis of proposed service and fare changes, and environmental justice. Those responsible for this area also coordinate with those who are responsible for service planning and delivery.
- The Human Resource Director is responsible for Equal Employment Opportunity (EEO) and the Americans with Disabilities Act (ADA) compliances for St. Mary's County Government. The Title VI Manager and STS Supervisor are responsible for ensuring the

daily implementation of the compliances. The Procurement Manager is responsible for ensuring the guidelines are followed in County solicitations.

V. OVERALL TITLE VI PROGRAM RESPONSIBILITIES

Following are general Title VI responsibilities of the agency. The Title VI Manager is responsible for substantiating that these elements of the plan are appropriately implemented and maintained, and for coordinating with those responsible for public outreach and involvement and service planning and delivery.

1. Data collection

To ensure that Title VI reporting requirements are met, St. Mary's Transit System maintains:

- A database of Title VI complaints received. The investigation of and response to each complaint is tracked within the database.
- A log of the public outreach and involvement activities undertaken to ensure that minority and low-income people had a meaningful access to these activities.

2. Annual Report and Updates

As a subrecipient providing service in a rural and small urban area, St. Mary's Transit System is required to notify MDOT MTA immediately when a Title VI complaint has been received. St. Mary's Transit System is also required to submit a report that documents any Title VI complaints on a quarterly basis as part of their quarterly Request for Reimbursement and an annual report to the MDOT MTA that documents any Title VI complaints received during the preceding 12 months, as well as a summary of the public outreach and involvement activities undertaken to ensure that minority and low-income people had a meaningful access to these activities.

The reporting form for the FY's 2021-2022 ATP is attached as Appendix B.

Further, St. Mary's Transit System submits to MDOT MTA updates to any of the following items since the previous submission, or a statement to the effect that these items have not been changed since the previous submission, indicating date.

- A copy of any compliance review report for reviews conducted in the last three (3) years, along with the purpose or reason for the review, the name of the organization that performed the review, a summary of findings and recommendations, and a report on the status or disposition of the findings and recommendations
- St. Mary's Transit System's Limited English Proficiency (LEP) plan
- St. Mary's Transit System's procedures for tracking and investigating Title VI complaints

- A list of Title VI investigations, complaints or lawsuits filed with the St. Mary's Transit System since the last submission
- A copy of St. Mary's Transit System's agency's notice to the public that it complies with Title VI and instructions on how to file a discrimination complaint

The annual Title VI report and updates are submitted to the MDOT MTA each year as part of the Annual Transportation Plan (ATP), or grant application submission.

3. Annual review of Title VI program

Each year, in preparing for the Annual Report and Updates, the Title VI Manager and Liaison(s) will review the agency's Title VI program to assure implementation of the Title VI plan. Additionally, they will review agency operational guidelines and publications, including those for contractors, to verify that Title VI language and provisions are incorporated, as appropriate.

4. Dissemination of information related to the Title VI program

Information on St. Mary's Transit System's Title VI program is to be disseminated to agency employees, contractors, and beneficiaries, as well as to the public, as described in the "public outreach and involvement" section of this document, and in other languages when needed according to the LEP plan as well as federal and State laws/regulations.

5. Resolution of complaints

Any individual may exercise his or her right to file a complaint with St. Mary's Transit System if that person believes that s/he or any other program beneficiaries have been subjected to unequal treatment or discrimination in the receipt of benefits/services or prohibited by non-discrimination requirements. St. Mary's Transit System will report the complaint to MDOT MTA within three (3) business days (per MDOT MTA requirements), and make a concerted effort to resolve complaints locally, using the agency's Nondiscrimination Complaint Procedures, as described in Appendix C. All Title VI complaints and their resolution will be logged as described under "Data collection" and reported annually (in addition to immediately) to MDOT MTA.

6. Written policies and procedures

St. Mary's Transit System's Title VI policies and procedures are documented in this plan and its appendices and attachments. This plan will be updated periodically to incorporate changes and additional responsibilities that arise. During the course of item 3 above (annual Title VI review), the Title VI Manager will determine whether or not an update is needed.

7. Internal education

St. Mary's Transit System's employees will receive training on Title VI policies and procedures upon hiring, upon promotion and on an annual basis. This training will include requirements of Title VI, St. Mary's Transit System's obligations under Title VI (LEP requirement included), required data that must be gathered and maintained and how it relates to the Annual Report and Update to MDOT MTA, and any findings and recommendations from the last MDOT MTA compliance review.

In addition, training will be provided when any Title VI-related policies or procedures change (agency-wide training), or when appropriate in resolving a complaint (which may be for a specific individual or for the entire agency, depending the on the complaint).

Title VI training is the responsibility of Transportation Specialist/Trainer.

8. Title VI clauses in contracts

In all procurements using a Purchase Order (PO) and/or requiring a written contract, St. Mary's Transit System's contract will include the non-discrimination clauses attached as Appendix A. The Title VI Manager will work with the St. Mary's County Procurement Manager.

Responsibilities of the Title VI Manager

The Title VI Manager is responsible for supervising the STS Supervisor, Assistant Supervisor and Transportation Specialist/Trainer in implementing, monitoring, and reporting on St. Mary's Transit System's compliance with Title VI regulations. In support of this, the Title VI Manager will:

- Identify, investigate, and eliminate discrimination when found to exist.
- Process Title VI complaints received by St. Mary's Transit System, in accordance with the agency's Nondiscrimination Complaint Procedures (attached as Appendix C.
- Meet with the STS Supervisor, Assistant Supervisor and Transportation Specialist/Trainer periodically to monitor and discuss progress, implementation, and compliance issues.
- Periodically review the agency's Title VI program to assess if administrative procedures are effective, staffing is appropriate, and adequate resources are available to ensure compliance.
- Work with STS Supervisor, Assistant Supervisor and Transportation Specialist/Trainer to develop and submit the Annual Title VI Report and Update submitted to the MDOT MTA as part of the ATP to the MDOT MTA.
- Review the Annual Title VI Report and Update to determine the effectiveness of the Title VI program and related efforts.
- Review contract documents to ensure Title VI assurance language is included.

- If St. Mary's Transit System receives a Title VI complaint about a contractor, work with the appropriate contract oversight staff and contractor to resolve the complaint and write a remedial action if necessary.
- Review important Title VI related issues with the Commissioner President, as needed.
- Assess communications and public involvement strategies to ensure adequate participation of impacted Title VI protected groups and address additional language needs when needed according to the agency's LEP plan and federal and State laws/regulations.

VI. PUBLIC OUTREACH AND INVOLVEMENT

Public outreach and involvement applies to and affects St. Mary's Transit System's mission and work program as a whole, particularly agency efforts and responsibilities related to St. Mary's Transit System's service planning. The overall goal of St. Mary's Transit System's public outreach and involvement policy is to secure early and continuous public notification about, and participation in, major actions and decisions by St. Mary's Transit System. In seeking public comment and review, St. Mary's Transit System makes a concerted effort to reach all segments of the population, including people from minority and low-income communities, and organizations representing these and other protected classes. St. Mary's Transit System utilizes a broad range of public outreach information and involvement opportunities, including a process for written comments, public meetings after effective notice, settings for open discussion, information services, and consideration of and response to public comments.

Procedures for notifying the public of Title VI rights and how to file a complaint

St. Mary's Transit System includes the following language on all printed information materials, on the agency's website, in press releases, in public notices, in published documents, and on posters on the interior of each vehicle operated in passenger service:

St. Mary's Transit is committed to ensuring that no person is excluded from participation in or denied the benefits of its transit services based on race, color or national origin, as protected by Title VI of the Civil Rights Act of 1964.

For additional information on St. Mary's Transit System's nondiscrimination policies and procedures, please visit the website at www.stmaryscountymd.gov or contact:

**Title VI Manager
St. Mary's Transit System
44829 St. Andrews Church Rd., P.O. Box 409
California, MD 20619
TitleVIManager@stmaryscountymd.gov**

Instructions for filing Title VI complaints are posted on the agency's website and in posters on the interior of each vehicle operated in passenger service, and are also included within St. Mary's Transit System's Passenger Information.

If you believe you have been subjected to discrimination under Title VI based on your race, color, national origin, or any aspect of this policy, you may file a complaint up to 180 days from the date of the alleged discrimination.

The complaint should include the following information:

- Your name, address, and how to contact you (i.e., telephone number, email address, etc.)
- How, when, where, and why you believe you were discriminated against.
- The location, names and contact information of any witnesses.

The complaint may be filed in writing to:

**Title VI Manager
St. Mary's Transit System
44829 St. Andrews Church Rd., P.O. Box 409
California, MD 20619
TitleVIManager@stmaryscountymd.gov**

Procedures for handling and recording Title VI investigations/complaints/lawsuits

Procedures for recording Title VI complaints are attached as Appendix D.

Should any Title VI investigations be initiated by FTA or MDOT MTA, or any Title VI lawsuits be filed against St. Mary's Transit System, the agency will follow these procedures:

- STS staff will notify the MDOT MTA Regional planner and the Office of Equal Opportunity Program (OECOP) immediately
- The record will be made in the log and a specific file folder for the event for tracking purposes and conclusions.

Strategies for Informing and Engaging Individuals with Limited English Proficiency (LEP)

LEP is a term that defines any individual not proficient in the use of the English language. The establishment and operation of an LEP program meets objectives set forth

in Title VI of the Civil Rights Act and Executive Order 13166, Improving Access to Services for Persons with Limited English Proficiency (LEP). This Executive Order requires federal agencies receiving financial assistance to address the needs of non-English speaking persons. The Executive Order also establishes compliance standards to ensure that the programs and activities that are provided by a transportation provider in English are accessible to LEP communities. This includes providing meaningful access to individuals who are limited in their use of English.

As required by MTA, St. Mary's Transit System developed a written LEP Plan, included as Appendix F.

Using 2020 Census data, St. Mary's Transit System will evaluate data to determine the extent of need for translation services of its vital documents and materials.

Public Outreach and Involvement Activities

St. Mary's Transit System takes the following steps to ensure that minority, low-income, and LEP members of the community have meaningful access to public outreach and involvement activities, including those conducted as part of the planning process for proposed changes in services, fares, and facilities development.

- Publishing public notices within local newspapers of general circulation as well as those targeted as minority and LEP persons and on the agency's website. Translators and method of contact is contained within the LEP plan. Public notices are issued to:
 - announce opportunity to participate or provide input in planning for service changes, fare changes, new services, and new or improved facilities (early in the process)
 - announce the formal comment period on proposed major service reductions and fare increases with instructions for submitting comments including a public hearing or opportunity for a public hearing with instructions for requesting a hearing.
 - announce impending service and fare changes (after plan has been finalized)
 - announce intent to apply for public transit funding from MDOT MTA, and to announce the formal comment period on the proposed program of projects, with a public hearing (or opportunity for one) (annually in advance of submitting the ATP)
- Posting public notices as described above at major passenger/public facilities and in all vehicles.
- Sending news releases to news media (newspapers, radio, television, web media) of general interest as well as those targeted at minority and LEP persons, as well as community-based organizations that serve persons protected under Title VI and which publish newsletters.

- Sending public service announcements (PSAs) to news media of general interest as well as those targeted at minority and LEP persons, as well as community-based organizations that serve persons protected under Title VI and which publish newsletters.
- Conducting in-person outreach upon request at public meetings, community-based organizations, human service organizations which assist low income and LEP persons, places of worship, service organization meetings, cultural centers, and other places and events that reach out to persons protected under Title VI. The availability of St. Mary's Transit System staff for such speaking engagements is posted on the agency's website
- Conducting public hearings at locations and meeting times that are accessible by public transit.
- Conducting periodic customer satisfaction surveys which are distributed to passengers on vehicles.

The above activities are the responsibility of the STS Supervisor and Assistant Supervisor.

St. Mary's Transit System will follow its adopted written policy (Appendix E) for the public comment process for major service reductions and fare increases.

Recordkeeping on Public Outreach and Involvement Activities

To support the development of the Title VI Annual Report and update to the MDOT MTA, maintain the following records related to public outreach and involvement:

- Paper files with copies of materials published or distributed for each planning project and service/fare change, as well as all news releases, public service announcements, surveys, and written summaries of in-person outreach events.
- A log/database of public outreach and involvement activities, including dates, planning project or service/fare change supported (if applicable), type of activity, LEP assistance requested/provided, target audience, number of participants, and location of documentation within paper files.

Maintenance of these records is the responsibility of the Title Vi Manager.

VII. Environmental Justice (for All Construction Projects)

For new construction and major rehabilitation or renovation projects where National Environmental Policy Act (NEPA) documentation is required, St. Mary's Transit System will integrate an environmental justice analysis into the NEPA documentation for submission to MDOT MTA. (please seek guidance from MDOT MTA as to whether or not an Environmental analysis is required)

The environmental justice

analysis includes:

- An identification of the low-income and minority communities within the study area affected by the project, and a discussion of the method used to identify this population (e.g., analysis of Census data, minority business directories, direct observation, a public involvements process, etc).
- For each of the identified low income or minority communities, a discussion of the adverse impacts of the project, both during and after its construction, such as:
 - Adverse effects on community cohesion or economic vitality by dividing or fracturing the community,
 - The isolation, exclusion, or separation of the community from the broader community,
 - Destruction or disruption of the availability of public and private facilities and services,
 - A change in employment opportunities,
 - Increased traffic in a residential area or decreased parking availability in a commercial area,
 - Air pollution, noise, vibration, change in storm water levels or flows, disturbance of contaminated soil or groundwater,
 - Disruption or destruction of man-made or natural resources such as parks, or Native American traditional cultural places,
 - Destruction or diminution of aesthetic or historic value, and
 - The cumulative effects of the above on the community.
- For each of the identified low income or minority communities, a discussion of all positive impacts such as an improvement in transit service, mobility, or accessibility.
- A description of all mitigation and environmental enhancement actions incorporated into the project to address the adverse impacts, including, but not limited to any special features of the relocation program that go beyond the requirements of the Uniform Relocation Act, to address adverse community impacts such as separation or cohesion issues and the replacement of the community resource destroyed by the project.
- A discussion of the remaining impacts, if any, and why further mitigation is not proposed.
- A comparison of mitigation and environmental enhancement actions implemented in conjunction with the project and affecting predominantly low-income and minority neighborhoods with mitigation implemented in conjunction with similar construction, renovation, or rehabilitation projects located in predominantly non-minority or non-low-income neighborhoods, or with segments of a corridor project that transverse non-minority and non-low-income neighborhoods.

The development of environmental justice analyses is the responsibility of the Department of Public Works and Transportation, Deputy Director.



APPENDIX A – Reporting for FY21-22 ATP

Category	Date	Summary (include basis of complaint: race, color or national origin)	Status	Action(s) taken: See below
ADA	(Month, Day, Year)		Active	
Investigations				
Lawsuits				
Complaints				

Submitted via MTA-STIS Quarterly Reports, Deputy Director, Transportation

Appendix C - St. Mary's Transit System Procedure for Title VI complaints

Policy states: Title VI of the Civil Rights Act of 1964 prohibits discrimination on the basis of race, color, or national origin in programs and activities receiving Federal Financial assistance. Specifically, Title VI provides that "no person in the United States shall, on the ground of race, color, or national origin, be excluded from participation in, be denied the benefits of, or be subjected to discrimination under any program or activity receiving Federal financial assistance" (42 U.S.C. Section 2000d).

St. Mary's Transit System is committed to ensuring that no person is excluded from participation in or denied the benefits of its transportation services based on race, color or national origin, as protected by Title VI in Federal Transit Administration (FTA) Circular 4702.1B.

Anyone who feels that they are discriminated are being denied participation in or being denied benefits of the transit services provided by St. Mary's Transit System, or otherwise being discriminated against because of their race, color, or national origin, gender, age or disability, they should contact Title VI Manager at: St. Mary's Transit System, 44829 St. Andrews Church Rd., P.O. Box 409, California, MD 20619, 301-475-4200 ext. 11220 or TitleVImanager@stmaryscountymd.gov.

A formal written complaint must be filed within one hundred-eighty (180) days following the dated of the alleged discrimination with the Title VI Manager.

The Title VI Manager shall investigate the complaint, reply to the complaint, verbally and/or written to the accusations. The Manager shall contact the MDOT MTA Regional Planner and the Office of Equal Opportunity Compliance Program (OECF) to advise them of the situation, resolutions shall be resolved at the local level if possible. If not the investigate will continue to the MDOMTA Regional Planner and the OECF.

All investigations, resolutions and lawsuits of the complaint documentations must be archived with St. Mary's County Government for seven (7) years for legal purposes.

St. Mary's Transit System Title VI Complaint Log

Date: _____

Submission Method: _____
(email, letter, website, in person, by phone, customer feedback form, other survey)

Name of person submitting: _____

Date of Incident: _____

Description of Incident: _____

Date complaint reported to MDOT MTA: _____

How was complaint reported to MDOT MTA: _____
(email, letter, phone)

Investigation findings: _____

Response to individual: _____

Date and method of response to individual: _____

Outcome: _____
(changes made)



Appendix E

Procedures for Public Comment:

1. Department request for Public Hearing submitted to Commissioners of St. Mary's County
2. If request is approved, department submits Notice of Public Hearing to *The Enterprise* to publish the upcoming and following Friday.
3. The Public Hearing is held 10 days later during the Commissioners of St. Mary's County's meeting.
4. Public may make comments at the hearing or during the public comment period (7 days from the date of the public hearing).
5. Commissioners of St. Mary's County decision is made one week from the close of the public comment period.

St. Mary's Transit System-STS

Appendix F:

LANGUAGE ASSISTANCE PLAN FOR PERSONS WITH LIMITED ENGLISH PROFICIENCY (LEP)

Introduction and Legal Basis

LEP is a term that defines any individual not proficient in the use of the English language. The establishment and operation of an LEP program meets objectives set forth in Title VI of the Civil Rights Act and Executive Order 13116, Improving Access to Services for Persons with Limited English Proficiency (LEP). This Executive Order requires federal agencies receiving financial assistance to address the needs of non-English speaking persons. The Executive Order also establishes compliance standards to ensure that the programs and activities that are provided by a transportation provider in English are accessible to LEP communities. This includes providing meaningful access to individuals who are limited in their use of English. The following LEP language implementation plan, developed by *St. Mary's Transit System* is based on FTA guidelines.

As required, *St. Mary's Transit System* developed a written LEP Plan (below). Using 2010 and American Community Survey (ACS) Census data, *St. Mary's Transit System* has evaluated data to determine the extent of need for translation services of its vital documents and materials.

LEP persons can be a significant market for public transit, and reaching out to these individuals can help increase their utilization of transit. Therefore, it also makes good business sense to translate vital information into languages that the larger LEP populations in the community can understand.

Assessment of Needs and Resources

The need and resources for LEP language assistance were determined through a four-factor analysis as recommended by FTA guidance.

Factor 1: Assessment of the Number and Proportion of LEP Persons Likely to be Served or Encountered in the Eligible Service Population

The agency has reviewed census data on the number of individuals in its service area that have limited English Proficiency, as well as the languages they speak.

U.S. Census Data – American Community Survey (2008-2012)

Data from the U.S. Census Bureau's American Community Survey (ACS) were obtained through www.census.gov by *St. Mary's Transit System's* service area. The agency's service area includes a total of 2,035 persons & 2.08% of the total population of 97,979 persons with Limited English Proficiency (those persons who indicated that they spoke English "not well," and "not at all" in the 2008-2012 ACS Census). See Exhibit A.

Factor 2: Assessment of Frequency with Which LEP Individuals Come Into Contact with the Transit Services or System

St. Mary's Transit System reviewed the relevant benefits, services, and information provided by the agency and determined the extent to which LEP persons have come into contact with these functions through the following channels:

- Contact with transit vehicle operators;
- Contact with transit dispatchers, supervisor, or manager;
- Calls to St. Mary's Transit System's customer service telephone line- 301-863-8400 x1120 or 1121;
- STS's office location- 44829 St. Andrews Church Rd., California, MD;
- Access to the St. Mary's County Government website ;
- Attendance at community meetings or public hearings hosted by St. Mary's Transit System;
- Contact with the STS' ADA complementary para-transit system (including applying for eligibility, making reservations, and communicating with drivers).

See APPENDIX D-1, D-2, and D-3 – St. Mary's Transit System Service Map w/ Minority Overview, Poverty Overview and Passenger Amenities, Source; 2010 Census

An Assessment of the frequency with which LEP individuals have come in contact with the transit systems services was completed and at this time there is no known contact. When warranted an interpreter can be contacted, see Exhibit B.

We will continue to identify emerging populations as updated Census and American Community Survey data become available for our service area. In addition, when LEP persons contact our agency, we attempt to identify their language and keep records on contacts to accurately assess the frequency of contact.

To assist in language identification, we can use a language identification flashcard based on that which was developed by the U.S. Census. (<http://www.lep.gov/ISpeakCards2004.pdf>)

Information from Community Organizations that Serve LEP Persons

To supplement the Census, education, and labor department data, St. Mary's Transit System conducted community outreach to the following organizations that work with LEP populations.

St. Mary's Transit System provides the following programs, activities and services:

STS Information available upon requests; staff members presented information through the Transportation Advisory Committee (TAC), in the local senior centers, senior housing, mental health facilities, Commission for persons with disabilities meetings and legislative receptions.

Factor 3: Assessment of the Nature and Importance of the Transit Services to the LEP Population

Based on past experience serving and communicating with LEP persons and interviews with community agencies, we learned that the following services/routes/programs are currently of particular importance LEP persons in the community. There is no new information as this time, however MTA staff is working with STS staff to ensure services/routes/programs reach people in the community. STS adheres to an Environmental Justice Policy and rotates the STS vehicles throughout the County, see Exhibit C, sample of Bus Assignments.

The following are the most critical services provided by St. Mary's Transit System for all customers, including LEP persons.

- Safety and security awareness instructions
- Emergency evacuation procedures
- Public transit services, including reduced fare application process
- ADA paratransit services (if your agency operates fixed-route), including eligibility certification process
- Other paratransit services
- Services targeted at low income persons

Factor 4: Assessment of the Resources Available to the Agency and Costs

The following language assistance measures are currently being provided by St. Mary's Transit System. The resources are implemented through staff time and bus schedule that are granted funding through Maryland Transit Administration to St. Mary's Transit System.

We anticipate that these activities and costs may increase as the system grows. Based on the analysis of demographic data and contact with community organizations and LEP persons, St. Mary's Transit System has determined that no additional services may be needed to provide meaningful access.

Resources

If needed, an in-kind assistance may be available through the County's Sheriff's department and other transit agencies who may be able to partner for language assistance services or online translation program.

The following procedures are followed by operators when an LEP person has a question on board a St. Mary's Transit System vehicle: Passengers are able to assist others with transit information.

Staff Training

As noted previously, all St. Mary's Transit System staff is provided with a list of available language assistance services and additional information and referral resources, updated annually.

All new hires receive training on assisting LEP persons as part of their sensitivity and customer service training. This includes:

- A summary of the transit agency's responsibilities under the DOT LEP Guidance;
- A summary of the agency's language assistance plan;

- A summary of the number and proportion of LEP persons in the agency's service area, the frequency of contact between the LEP population and the agency's programs and activities, and the importance of the programs and activities to the population;
- A description of the type of language assistance that the agency is currently providing and instructions on how agency staff can access these products and services; and
- A description of the agency's cultural sensitivity policies and practices.

Also, all staff who routinely come into contact with customers, as well as their supervisors and all management staff, receive refresher training on policies and procedures related to assisting LEP persons. Manager has received training "How to Speak Spanish" on an elementary level. On-line courses are available as needed.

Providing Notice to LEP Persons

LEP persons are notified of the availability of language assistance through the following approaches:

- Following our Title VI policy statement included on our vital documents.
- Maryland Motor Vehicle Administration list of interpreters and translation providers as a public service.
- I can speak information sheets

LEP persons will also be included in all community outreach efforts related to service and fare changes.

Monitoring/Updating the plan

This plan will be updated on a periodic basis (at least every three years), based on feedback, updated demographic data, and resource availability.

As part of ongoing outreach to community organizations, St. Mary's Transit System will solicit feedback on the effectiveness of language assistance provided and unmet needs. In addition, we will conduct periodic of the adequacy and quality of the language assistance provided, and determines changes to LEP needs.

Based on the feedback received from community members and agency employees, St. Mary's Transit System will make incremental changes to the type of written and oral language assistance provided as well as to their staff training and community outreach programs. The cost of proposed changes and

the available resources will affect the enhancements that can be made, and therefore St. Mary's Transit System will attempt to identify the most cost-effective approaches.

As the community grows and new LEP groups emerge, St. Mary's Transit System will strive to address the needs for additional language assistance.

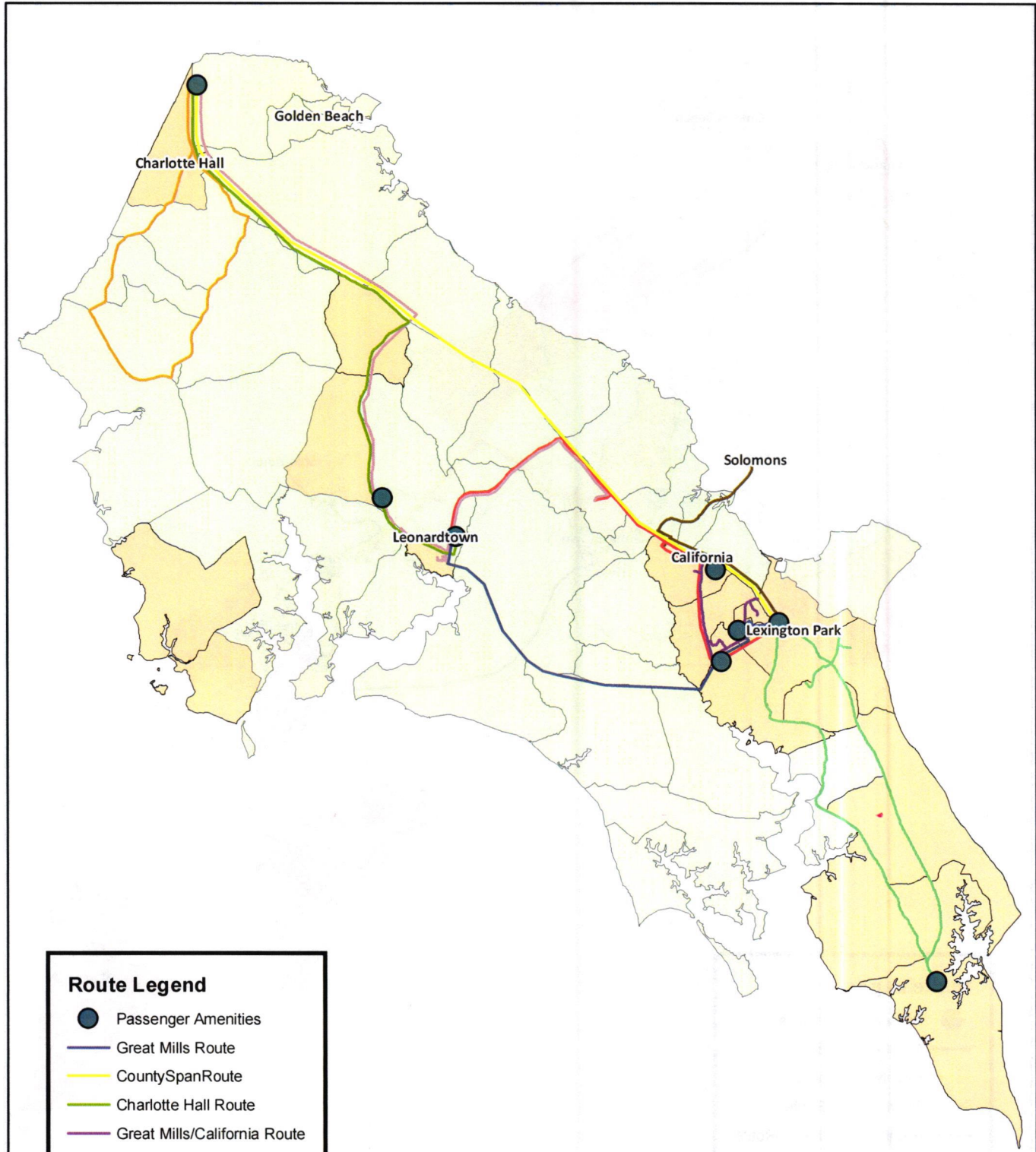
MINORITY REPRESENTATION ON PLANNING AND ADVISORY BODIES

Title 49 CFR Section 21.5(b)(1)(vii) states that a recipient may not, on the grounds of race, color, or national origin, "deny a person the opportunity to participate as a member of a planning, advisory, or similar body which is an integral part of the program."

St. Mary's Transit System has transit-related, non-elected planning boards, advisory councils or committees, or similar committees, the membership of which we select.

Committee	Black or African American	White/Caucasian	Latino/Hispanic	American Indian or Alaska Native	Asian	Native Hawaiian or other Pacific Islander	Other <i>*Note</i>	Totals
Transportation Advisory Committee (TAC)	1	14	0	0	1	0	0	16
% of TAC Committee	.07%	.86%			.07%			

**Note Tagalog, Chinese, French*



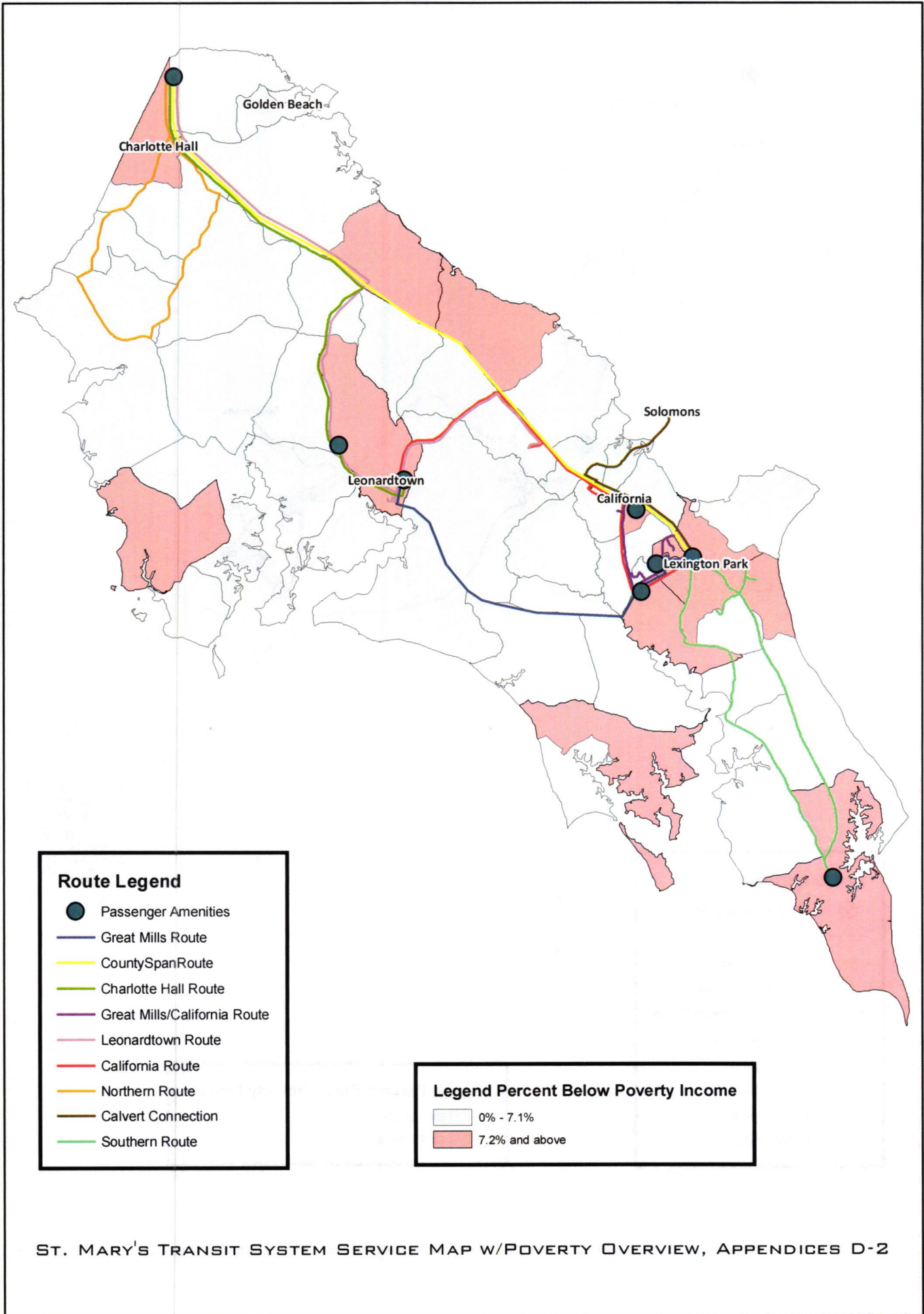
Route Legend

- Passenger Amenities
- Great Mills Route
- CountySpanRoute
- Charlotte Hall Route
- Great Mills/California Route
- Leonardtown Route
- California Route
- Northern Route
- Calvert Connection
- Southern Route

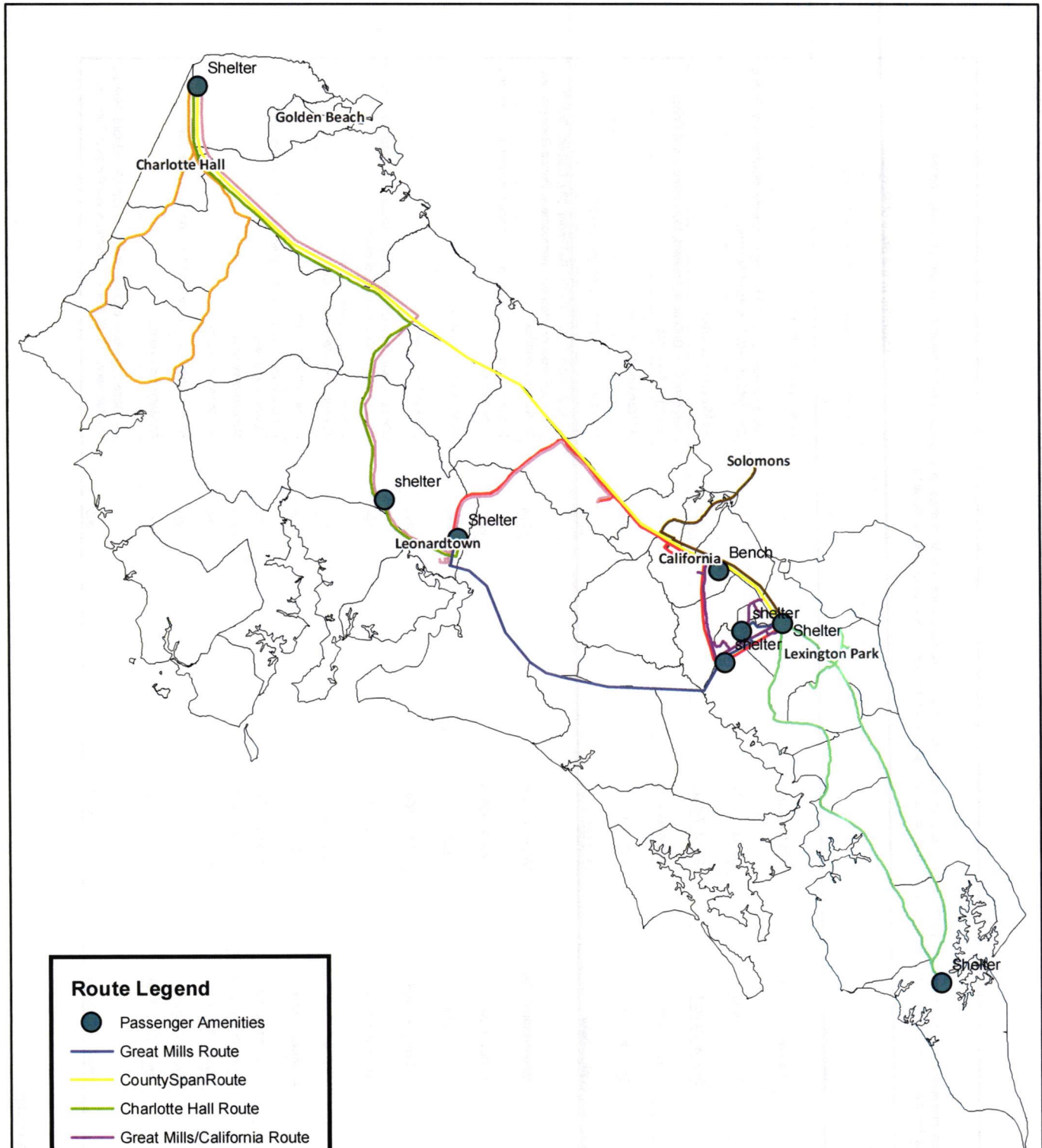
Legend Percent Below Poverty Income

- 0% - 20.2%
- 20.3% and above

ST. MARY'S TRANSIT SYSTEM SERVICE MAP W/MINORITY OVERVIEW, APPENDICES D-1



ST. MARY'S TRANSIT SYSTEM SERVICE MAP W/POVERTY OVERVIEW, APPENDICES D-2



Route Legend

- Passenger Amenities
- Great Mills Route
- CountySpanRoute
- Charlotte Hall Route
- Great Mills/California Route
- Leonardtown Route
- California Route
- Northern Route
- Calvert Connection
- Southern Route

Legend Passenger Amenities

- Passenger Amenities

ST. MARY'S TRANSIT SYSTEM SERVICE MAP W/PASSENGER AMENITY OVERVIEW, APPENDICES D-3

Please note: The Maryland Motor Vehicle Administration (MVA) provides this list of interpreters and translation providers as a public service. The MVA does not endorse or recommend any individual included on the Interpreter/Translator Provider Listing. Nor is the MVA responsible for performance or non-performance of interpreter or translation services by any individual listed.

Language(s)	Type of Service: Interpreter/Translator	Provider Name	ID #	Counties in the State of Maryland	
Amharic (Ethiopian)	Interpreter/Translator	Alemu, Hailu	240-350-7173	1677	Baltimore City, Frederick, Howard, Montgomery and Prince George's Counties
Amharic (Ethiopian)	Interpreter/Translator	Ambaye, Yonathan	301-326-9011	1944	All Maryland Counties
Amharic (Ethiopian)	Interpreter/Translator	Dejene, Abenet	301-377-8512	1747	Anne Arundel, Calvert, Frederick, Howard, Montgomery, Prince George's and Washington Counties.
Amharic (Ethiopian)	Translator	Dejene, Abenet	301-377-8512	1747	All Maryland Counties
Amharic (Ethiopian)	Interpreter/Translator	Geneti, Solomon	202-409-8416	1050	Baltimore City, Baltimore, Howard, Montgomery and Prince George's Counties
Amharic (Ethiopian)	Interpreter/Translator	Ghirmay, Yakob	443-529-7572	1745	All Maryland Counties
Amharic (Ethiopian)	Interpreter/Translator	Tyiti, Chaltu	240-595-9634	2017	Montgomery and Prince George's Counties.
Amharic (Ethiopian)	Interpreter/Translator	Weldehawariat, Tirsit	240-406-2036	1974	Anne Arundel, Baltimore Co, Baltimore City, Calvert, Carroll, Charles, Frederick, Howard, Montgomery, Prince George's and St. Mary's Counties
Amharic (Ethiopian)	Interpreter	Wolday, Aida	240-235-5545	2077	Baltimore, Howard, Montgomery, Prince George's counties and Baltimore City
Amharic (Ethiopian)	Translator	Zekiros, Astair	703-534-1722; 202-215-8392	1157	All Maryland Counties
Arabic	Interpreter/Translator	Al Khafaji, Hussein	443-653-5943	2013	All Maryland Counties
Arabic	Interpreter/Translator	Al Khalaf, Wijdan	702-772-6216	1865	Allegany, Baltimore Co, Frederick, Howard, Montgomery, Prince George's and Washington Counties.
Arabic	Interpreter/Translator	Almutawakel, Fatima	703-624-8773	2071	Interpret: Prince Georges County Translate: All Maryland Counties.
Arabic	Interpreter/Translator	Al Shawi, Ahmed	443-630-1238	1005	All Maryland Counties
Arabic	Interpreter	Al Tameemi, Bashar	443-939-2573	2042	Anne Arundel, Baltimore Co, Baltimore City, Harford and Howard Counties
Arabic	Interpreter/Translator	El-Khatib, Farid Yousuf	202-531-5555	1038	Montgomery County
Arabic	Interpreter/Translator	Ghaleb, Ragaey	818-614-0171	1756	All Maryland Counties
Arabic	Interpreter/Translator	Ghazzoul, Fatima	443-668-9156	1051	Anne Arundel, Baltimore Counties and Baltimore City
Arabic	Interpreter/Translator	Henry Said, Basem	973-610-3241	1873	All Maryland Counties
Arabic	Interpreter/Translator	Husain, Tabassum	410-336-9755	1063	AA, Balto City, Balto county, Carroll, Frederick, Harford, Howard, Montgomery, PG, St. Mary's, Talbot, & Washington Counties

Arabic	Interpreter/Translator	Ishak, Amir	443-618-2166, 443-618-1879, 410-766-9898	1066	All Maryland Counties
Arabic	Interpreter/Translator	Ishak, Nahed	443-618-1879; 443-618-2166	2036	All Maryland Counties
Arabic	Interpreter/Translator	Itani, Rouane	202-683-9648	1177	Anne Arundel, Baltimore Co, Baltimore City, Carroll, Frederick, Howard, Kent, Montgomery, Prince George's, Queen Anne's and St. Mary's Counties
Arabic	Interpreter	Jabbari, Abdellah	443-506-9540	1069	All Maryland Counties
Arabic	Interpreter/Translator	Khoury, George	240-413-3651	1076	Anne Arundel, Montgomery and Prince George Counties
Arabic	Interpreter/Translator	Mahmood, Aysar	301-272-7702	1090	AA Cty., Balto. Cty, Balto. City, Frederick, Howard, Montgomery and Prince George's County, Queen Anne's, St. Mary's, Somerset, Talbot, Washington, Wicomico, Worcester Counties
Arabic	Interpreter	Mahmood, Aysar	301-272-7702	1090	Harford, Howard and Kent Counties
Arabic	Interpreter/Translator	Majlaton, Adib	240-273-6225	2062	Anne Arundel, Howard, Montgomery and Prince George's Counties
Arabic	Interpreter/Translator	Mansour, Samir	410-533-5284	2029	All Maryland Counties
Arabic	Interpreter/Translator	Mekhaeil, Hany	410-980-1248	1714	All Maryland Counties
Arabic	Interpreter/Translator	Muhammed, Huda	410-900-3525; 443-900-8013	1899	All Maryland Counties
Bengali	Interpreter/Translator	Mehta, Nisheeth	240-605-1066	1094	All Maryland Counties
Bosnian	Interpreter/Translator	Babcock, Maida	240-476-0192; 301-251-0540	1012	Baltimore City, Baltimore, Howard, Montgomery, PG, Queen Anne's Counties
Bulgarian	Interpreter/Translator	Ivanova, Stanimira	240-422-2549	1068	Baltimore City, AA, Balto., Carroll, Frederick, Harford, Howard, Montgomery, PG, Queen Anne's, and Washington counties
Burmese	Interpreter/Translator	Bawhirin, Joseph	240-381-4488	1702	All Maryland Counties
Burmese	Interpreter/Translator	Kimlai, Kam	443-629-9947	1926	All Maryland Counties
Burmese	Interpreter/Translator	Phunkulh, Stella M	301-490-0916 301-741-9880	1111	Baltimore City, AA, Baltimore, Carroll, Frederick, Howard, Montgomery, PG and Washington Counties
Cantonese	Interpreter/Translator	Li, Changbai	410-504-1889; 202-725-0718	1079	All Maryland Counties
Cantonese	Interpreter/Translator	Li, Gary Ge	240-328-2170	1080	Baltimore City, Howard, Montgomery, PG Counties
Cantonese	Interpreter/Translator	Li, Link	443-535-2708	1081	All Maryland Counties
Cantonese	Interpreter/Translator	Lo, Bonnita	443-996-1616	1086	All Maryland Counties
Cantonese	Interpreter/Translator	Qiao, Daniel	703-762-6745	1931	All Maryland Counties
Catalan	Interpreter/Translator	Riera Salarich, Ivette	720-999-5025	2067	Cecil, Kent, Queen Anne's and Washington Counties.
Chin	Interpreter/Translator	Bawhirin, Joseph	240-381-4488	1702	All Maryland Counties
Chin (Haka, Falami)	Interpreter/Translator	Phunkulh, Stella M	301-490-0916 301-741-9880	1111	Baltimore City, AA, Baltimore, Carroll, Frederick, Howard, Montgomery, PG and Washington Counties

Chinese	Interpreter/Translator	Cao, Hui	443-472-3353	2027	Anne Arundel, Baltimore Co, Frederick and Howard Counties
Chinese	Interpreter/Translator	Jiang, Yingqian	301-281-3588	1070	All Maryland Counties
Chinese	Interpreter/Translator	Li, Changbai	410-504-1889; 202-725-0718	1079	All Maryland Counties
Chinese	Interpreter/Translator	Li, Link	443-535-2708	1081	All Maryland Counties
Chinese	Interpreter/Translator	Liu, Shubing	240-731-8803	1985	Translator: All Maryland counties. Interpreter: Anne Arundel, Baltimore, Frederick, Howard, Montgomery, Prince George's Counties and Baltimore City.
Chinese	Interpreter/Translator	Liu, Xin	240-644-7607	1083	All Maryland Counties
Chinese	Interpreter/Translator	Lo, Bonnita	443-996-1616	1086	All Maryland Counties
Chinese	Interpreter/Translator	Sun, Wei Yi	703-627-9688	1694	All Maryland Counties
Chinese	Interpreter/Translator	Wang, Zhengyu	240-328-8525, 240-453-0352	1279	Baltimore, Frederick, Howard, Montgomery, Prince George's counties and Baltimore City.
Chinese	Interpreter/Translator	Yan, ShiJian	443-784-2050	2045	Anne Arundel, Baltimore County, Carroll, Frederick, Howard, Montgomery
Chinese	Interpreter/Translator	Zheng, Yueping	301-283-8888	2072	Anne Arundel, Baltimore, Frederick, Howard, Montgomery, Prince Georges Counties and Baltimore City.
Chinese	Interpreter/Translator	Zhou, Yvonne	240-462-5118	1158	All Maryland Counties
Croatian	Translator	Babcock, Maida	301-251-0540	1012	Allegany, AA, Calvert, Caroline, Carroll, Cecil, Charles, Dorchester, Garrett, Harford, Kent, St. Mary's, Somerset, Talbot, Washington, Wicomico and Worcester Counties
Croatian	Interpreter/Translator	Babcock, Maida	240-476-0192; 301-251-0540	1012	Baltimore City, Baltimore, Howard, Montgomery, PG, Queen Anne's Counties
Dutch	Interpreter/Translator	Janse, Jacqueline Jacoba	410-600-5465	2039	All Maryland Counties
French (Ewe, Mina, Pidgin)	Interpreter/Translator	Mensah, Ben (Ashiboe)	301-437-7142	1096	All Maryland Counties
Ewondo	Interpreter/Translator	Mballa, Bienvenu	224-436-4157	2030	All Maryland Counties
Falam	Interpreter/Translator	Kimlai, Kam	443-629-9947	1926	All Maryland Counties
Farsi	Interpreter/Translator	Fatahian-Tehran, Zahra	301-774-6891; 301-915-4849	1043	All Maryland Counties
Farsi	Interpreter/Translator	Kaveh, Behzad	301-922-3467	2065	Interpreter: Montgomery County Translator: All Maryland Counties
Farsi	Interpreter/Translator	Namvar, Houshmand	240-449-7132	1103	All Maryland Counties
French	Interpreter/Translator	Abeh, Fontengwan	410-499-4115	1002	Anne Arundel, Baltimore County, Baltimore City, Calvert, Carroll, Frederick, Harford, Howard, Montgomery, Prince George's and Queen Anne's Counties
French	Interpreter/Translator	Assani-Pio, Haolatou	240-715-8038	1937	Montgomery, Prince George's and Washington Counties
French	Interpreter/Translator	Cajahuarina Schreiber, Yura	301-312-0948	2032	Frederick and Montgomery Counties
French	Translator	Danjont, Guy	302-492-1258; 302-359-2011	1033	All Maryland Counties

French	Interpreter/Translator	Douglas, Alexandra	240-481-9249	1037	All Maryland Counties
French	Interpreter/Translator	Eitle Sako, Cyntia A.	240-893-3761; 301-200-3657	2044	Frederick, Howard, Montgomery, Prince George's
French	Interpreter/Translator	Feldman, Antonia J.	301-742-2090; 301-571-0062	1044	Frederick, Montgomery, Prince George's and Washington Counties
French	Interpreter/Translator	Gauvin, Marie-Ginette	509-308-3596	1965	All Maryland Counties
French	Interpreter/Translator	Gnahoui-David, Constantine	301-401-9089; 240-669-4190	1321	Baltimore City, Charles, Frederick, Montgomery and Prince George's Counties
French	Interpreter/Translator	Godwin, Caroline Isabelle	202-386-6362; 202-270-4295	1052	Anne Arundel, Montgomery, Prince George's Counties and Baltimore City
French	Translator	Godwin, Caroline Isabelle	202-386-6362; 202-270-4295	1052	Howard County
French	Interpreter/Translator	Itani, Rouane	202-683-9648	1177	Anne Arundel, Baltimore Co, Baltimore City, Carroll, Frederick, Howard, Kent, Montgomery, Prince George's, Queen Anne's and St. Mary's Counties
French	Interpreter/Translator	Janse, Jacqueline Jacoba	410-600-5465	2039	All Maryland Counties
French	Interpreter/Translator	Kayihura, Amani	443-635-8284	1674	All Maryland Counties
French	Translator	Libanati Cesar	301-920-1987	1082	Allegany, Calvert, Caroline, Carroll, Cecil, Charles, Dorchester, Calvert, Harford, Kent, Queen Anne's, St. Mary's, Somerset, Talbot, Washington, Wicomico and Worcester Counties
French	Interpreter/Translator	Libanati, Cesar	301-920-1987	1082	Baltimore City, Anne Arundel, Baltimore, Howard, Montgomery and Prince George's Counties
French (Ewe, Mina, Pidgin)	Interpreter/Translator	Mensah, Ben (Ashiboe)	301-437-7142	1096	All Maryland Counties
French	Interpreter/Translator	Mballa, Bienvenu	224-436-4157	2030	All Maryland Counties
French	Interpreter/Translator	Mikala, Sosthene	1-917-742-7474; 973-736-3813	2002	All Maryland Counties
French	Interpreter/Translator	Mokuba, Odette	240-486-7333	2001	Anne Arundel, Baltimore Co, Baltimore City, Howard, Montgomery, Prince George's and Washington Counties.
French	Interpreter/Translator	Noumsi, Jacques	240-643-4615	1746	Anne Arundel, Baltimore Co, Baltimore City, Calvert, Carroll, Charles, Frederick, Harford, Howard, Montgomery, Prince George's and Washington Counties.
French	Interpreter/Translator	Spiler Jenkins, Mojca	410-585-7066	1951	Anne Arundel, Baltimore Co, Baltimore City, Harford and Howard Counties
French	Interpreter/Translator	Tchoumi, Bertrand	443-739-6727; 410-602-3311; 443-278-3328	1143	Baltimore City, Anne Arundel, Baltimore, Carroll, Frederick, Harford, Howard, Montgomery & PG Counties
French	Translator	Wolfrum, Jane	410-375-3792	2041	All Maryland Counties
Georgian	Interpreter/Translator	Stewart-Hilkert, Katherine	301-684-2715; 813-405-9732	1343	All Maryland Counties
German	Interpreter/Translator	Spiler Jenkins, Mojca	410-585-7066	1951	Anne Arundel, Baltimore Co, Baltimore City, Harford and Howard Counties

German	Translator	Stumpf, Carrie	240-625-7969	2043	All Maryland Counties
German	Translator	Wolfrum, Jane	410-375-3792	2041	All Maryland Counties
Greek	Interpreter	Karais, Stella	410-558-0360	1072	Anne Arundel, Baltimore County, Baltimore City, Harford & Howard Counties
Greek	Interpreter/Translator	Nicolaidis, Maria	410-905-1638	1104	All Maryland Counties
Greek	Interpreter/Translator	Saoutis, Maria	301-294-0198	1722	Montgomery County
Greek	Translator	Saoutis, Maria	301-294-0198	1722	All Maryland Counties
Gujarati	Interpreter/Translator	Mehta, Nisheeth	240-605-1066	1094	All Maryland Counties
Gujarati	Interpreter	Patel, Jay	410-504-3051	1855	All Maryland Counties
Gujarati	Interpreter/Translator	Shah, Ashvin	443-812-0316; 443-364-4147	2021	Anne Arundel, Baltimore Co, Baltimore City, Carroll, Frederick, Howard and Montgomery Counties.
Haitian-Creole	Translator	Danjont, Guy	302-492-1258; 302-359-2011	1033	All Maryland Counties
Haitian-Creole	Interpreter/Translator	Gauvin, Marie-Ginette	509-308-3596	1965	All Maryland Counties
Haitian-Creole	Interpreter/Translator	Toussaint, Roosevelt	443-736-8597; 443-783-0554; 410-219-2626	1737	Dorchester, Somerset, Wicomico and Worcester Counties.
Hebrew	Interpreter/Translator	Arad, Lilach	301-674-6296	1784	Anne Arundel, Baltimore Co, Baltimore City, Carroll, Frederick, Howard, Montgomery and Prince George's Counties
Hebrew	Interpreter/Translator	Lev, Miriam	240-389-7500	2000	Anne Arundel, Carroll, Howard, Montgomery, Prince George's, Queen Anne's and St. Mary's Counties.
Hindi	Interpreter/Translator	Ahmed, Aqeel	443-799-6294	2014	All Maryland Counties
Hindi	Interpreter/Translator	Chaudhry, Halim Muhammad	410-446-5640	1027	Baltimore City, AA, Baltimore, Carroll, Frederick, Harford, Howard, Montgomery, PG and Washington Counties
Hindi	Interpreter/Translator	Faiz, Raja	443-465-8027; 410-298-1500	1042	Anne Arundel, Baltimore City, Baltimore Co and Howard Counties
Hindi	Interpreter	Husain, Syed	410-365-1550	1062	Baltimore City, AA, Baltimore, Carroll, Cecil, Frederick, Harford, Howard, Montgomery & PG Counties
Hindi	Interpreter/Translator	Husain, Tabbasum	410-336-9755; 410-465-8767	1063	AA, Balto City, Balto county, Carroll, Frederick, Harford, Howard, Montgomery, PG, St. Mary's, Talbot, & Washington Counties
Hindi	Translator	Husain, Tabbasum	410-336-9755; 410-465-8767	1063	Alleghany, Calvert, Cecil, Charles, Dorchester, Garrett, Kent, Queen Anne's, Somerset, Wicomico & Worcester Counties
Hindi	Interpreter/Translator	Khan, Aqib	240-485-4660	2007	All Maryland Counties
Hindi	Interpreter/Translator	Mehta, Nisheeth	240-605-1066	1094	All Maryland Counties
Hindi	Interpreter/Translator	Mohsin, Nadeem	410-900-5475	1099	All Maryland Counties

Hindi	Interpreter/Translator	Nadeem, Shamim	410-900-5474	1878	Baltimore Co and Baltimore City.
Hindi	Interpreter	Pilpile, Sabrin	443-251-9912	1921	All Maryland Counties
Hindi	Interpreter/Translator	Raees, Bushra	443-520-5625	1114	Baltimore City, AA, Baltimore, Harford, Howard, Montgomery and Prince George's Counties
Hindi	Interpreter/Translator	Raja, Ali	410-480-0099; 443-878-7024; 410-298-1500	1115	Anne Arundel, Baltimore City, Baltimore Co, Frederick and Howard Counties
Hindi	Interpreter/Translator	Raja, Uzma	443-465-9028; 410-298-1500	1117	Baltimore City, Baltimore and Howard Counties
Hindi	Interpreter/Translator	Shah, Ashvin	443-812-0316; 443-364-4147	2021	Anne Arundel, Baltimore Co, Baltimore City, Carroll, Frederick, Howard and Montgomery Counties.
Hindi (Urdu, Punjabi)	Interpreter/Translator	Sheikh, Imran	443-797-7471	2076	All Maryland Counties
Hindi	Interpreter	Usman Ali Khan, Sardar	240-421-0403	1658	All Maryland Counties
Hindi	Interpreter	Zahoor, Amjad	443-904-2244	1980	All Maryland Counties
Indonesian	Interpreter/Translator	Amkas, Yazid	240-351-6015, 202-417-0391	2057	Anne Arundel, Baltimore, Baltimore City, Frederick, Montgomery and Prince George's counties.
Indonesian	Interpreter/Translator	Locke, Sitti	571-490-2811	1991	All Maryland Counties
Kinyarwanda	Interpreter/Translator	Kayihura, Amani	443-635-8284	1674	All Maryland Counties
Kirundi	Interpreter/Translator	Kayihura, Amani	443-635-8284	1674	All Maryland Counties
Korean	Interpreter/Translator	Hennessey, Dina	410-206-4252	1058	All Maryland Counties
Krio	Interpreter/Translator	Abeh, Fontengwan	410-499-4115	1002	Anne Arundel, Baltimore County, Baltimore City, Calvert, Carroll, Frederick, Harford, Howard, Montgomery, Prince George's and Queen Anne's Counties
Lao	Interpreter/Translator	Patamawenu, Nisara	301-253-5425; 240-899-0268	1676	All Maryland Counties
Lingala	Interpreter/Translator	Mokuba, Odette	240-486-7333	2001	Anne Arundel, Baltimore Co, Baltimore City, Howard, Montgomery, Prince George's and Washington Counties.
Luo	Interpreter/Translator	Yahuma, Rosebelle	612-802-5201	1831	All Maryland Counties
Macedonian	Interpreter/Translator	Babcock, Maida	240-476-0192; 301-251-0540	1012	Baltimore City, Baltimore, Howard, Montgomery, Prince George's and Queen Anne's Counties
Mandarin	Interpreter/Translator	Cao, Hui	443-472-3353	2027	Anne Arundel, Baltimore Co, Frederick and Howard Counties
Mandarin	Interpreter/Translator	Li, Changbai	410-504-1889; 202-725-0718	1079	All Maryland Counties
Mandarin	Interpreter/Translator	Li, Gary Ge	240-328-2170	1080	Balto. City, Howard Cty, Montgomery and PG Counties
Mandarin	Interpreter/Translator	Li, Link	443-535-2708	1081	All Maryland Counties
Mandarin	Interpreter/Translator	Liu, Shubing	240-731-8803	1985	Translator: All Maryland counties. Interpreter: Anne Arundel, Baltimore, Frederick, Howard, Montgomery, Prince George's Counties and Baltimore City.

Mandarin	Interpreter/Translator	Liu, Xin	240-644-7607	1083	All Maryland Counties
Mandarin	Interpreter/Translator	Lo, Bonnitia	443-996-1616	1086	All Maryland Counties
Mandarin	Interpreter/Translator	Qiao, Daniel	703-762-6745	1931	All Maryland Counties
Mandarin	Interpreter/Translator	Sun, Wei Yi	703-627-9688	1694	All Maryland Counties
Mandarin	Interpreter/Translator	Wang, Ni	202-400-0891	1996	All Maryland Counties
Mandarin	Interpreter/Translator	Zheng, Yueping	301-283-8888	2072	Anne Arundel, Baltimore, Frederick, Howard, Montgomery, Prince Georges Counties and Baltimore City.
Mandarin	Interpreter/Translator	Zhou, Yvonne	240-462-5118	1158	All Maryland Counties
Metta	Interpreter/Translator	Abeh, Fontengwan	410-499-4115	1002	Anne Arundel, Baltimore County, Baltimore City, Calvert, Carroll, Frederick, Harford, Howard, Montgomery, Prince George's and Queen Anne's Counties
Mina (Ewe, French, Pidgin)	Interpreter/Translator	Mensah, Ben (Ashiboe)	301-437-7142	1096	All Maryland Counties
Moghamo	Interpreter/Translator	Abeh, Fontengwan	410-499-4115	1002	Anne Arundel, Baltimore County, Baltimore City, Calvert, Carroll, Frederick, Harford, Howard, Montgomery, Prince George's and Queen Anne's Counties
Mongolian	Interpreter/Translator	Sandag, Tselmuun	917-412-3523	1130	All Maryland Counties
Montenegrin	Translator	Babcock, Maida	240-476-0192; 301-251-0540	1012	Allegany, AA, Calvert, Caroline, Carroll, Cecil, Charles, Dorchester, Garrett, Harford, Kent, St. Mary's, Somerset, Talbot, Washington, Wicomico and Worcester Counties
Nepali	Interpreter/Translator	Karmacharya, Anit	443-824-6626	1159	Allegany, AA, Baltimore, Carroll, Cecil, Frederick, Garrett, Harford, Howard, Kent, Motgomery, PG, Somerset and Washington Counties, Baltimore City
Oromo	Interpreter/Translator	Tyiti, Chaltu	240-595-9634	2017	Montgomery and Prince George's Counties.
Persian (Farsi)	Interpreter/Translator	Fatahian-Tehran, Zahra	301-774-6891; 301-915-4849	1043	All Maryland Counties
Persian (Farsi)	Interpreter/Translator	Kaveh, Behzad	301-922-3467	2065	Interpreter: Montgomery County Translator: All Maryland Counties
Persian	Interpreter/Translator	Namvar, Houshmand	240-449-7132	1103	All Maryland Counties
Pidgin	Interpreter/Translator	Abeh, Fontengwan	410-499-4115; 240-644-3977; 410-746-3932	1002	Anne Arundel, Baltimore County, Baltimore City, Calvert, Frederick, Harford, Prince George's Counties
Pidgin	Interpreter/Translator	Atem, Maurice	240-413-8640; 202-579-1372	1009	All Maryland Counties
Pidgin (Ewe, Mina, French)	Interpreter/Translator	Mensah, Ben (Ashiboe)	301-437-7142	1096	All Maryland Counties
Pidgin	Interpreter/Translator	Noumsi, Jacques	240-643-4615	1746	Anne Arundel, Baltimore Co, Baltimore City, Calvert, Carroll, Charles, Frederick, Harford, Howard, Montgomery, Prince George's and Washington Counties.
Polish	Interpreter/Translator	Bondyra, Malgorzata	410-458-1938	1935	All Maryland Counties
Polish	Interpreter/Translator	Deemer, Katarzyna	410-591-1223	1407	Anne Arundel, Baltimore Co, Baltimore City, Carroll and Harford Counties

Polish	Interpreter/Translator	Honeywell, Margaret	410-242-4127; 443-621-9179	1843	All Maryland Counties
Portuguese	Interpreter/Translator	Abaracon, Margarita	202-500-6332; 202-243-0117	1649	Anne Arundel, Baltimore Co, Baltimore City, Calvert, Howard, Montgomery, Prince George's and St. Mary's Counties.
Portuguese	Interpreter/Translator	Almeida, Joel	301-310-8070	2081	All Maryland Counties
Portuguese	Interpreter/Translator	Bradford, Garrett	210-240-0972	2075	All Maryland Counties
Portuguese	Interpreter/Translator	Campbell DaSilva, Dorianne	240-418-6123	1959	All Maryland Counties
Portuguese	Interpreter/Translator	Costa, Nieves Valdes	301-370-7054; 301-527-0999	1145	All Maryland Counties
Portuguese	Interpreter/Translator	de Albuquerque Mendonca, Kelly	410-988-3008	2004	Frederick, Howard and Montgomery Counties
Portuguese	Translator	de Albuquerque Mendonca, Kelly	410-988-3008	2004	All Maryland Counties
Portuguese	Interpreter/Translator	Knight, Gary	202-549-9749	1952	All Maryland Counties
Portuguese	Interpreter/Translator	Llerena, Alexandra	240-832-4648	1661	All Maryland Counties
Portuguese	Interpreter/Translator	Montes, Luis	301-500-7191	2058	All Maryland Counties
Portuguese	Interpreter/Translator	Petrus, Darryn	410-978-5936	1524	All Maryland Counties
Portuguese	Interpreter/Translator	Ponce, Gonzalo	202-342-7564; 202-746-1291	1642	All Maryland Counties
Portuguese	Interpreter/Translator	Sales Knight, Caroline	240-354-9353	1966	Anne Arundel, Baltimore City, Carroll, Howard, Montgomery, Prince George's and Queen Anne's Counties
Pothowari	Interpreter/Translator	Raja, Uzma	443-465-9028; 410-298-1500	1117	Baltimore City, Baltimore and Howard Counties
Punjabi	Interpreter/Translator	Ahmed, Aqeel	443-799-6294	2014	All Maryland Counties
Punjabi	Interpreter/Translator	Butt, Tariq	443-326-0559	1022	Anne Arundel, Baltimore County, Baltimore City, Kent, and Queen Anne's Counties
Punjabi	Interpreter/Translator	Chaudhry, Halim Muhammad	410-446-5640	1027	Baltimore City, AA, Baltimore, Carroll, Frederick, Harford, Howard, Montgomery, PG and Washington Counties
Punjabi	Interpreter/Translator	Faiz, Raja	443-465-8027; 410-298-1500	1042	Anne Arundel, Baltimore City, Baltimore Co and Howard Counties
Punjabi	Interpreter/Translator	Husain, Syed	410-365-1550	1062	Baltimore City, AA, Baltimore, Carroll, Cecil, Frederick, Harford, Howard, Montgomery & PG Counties
Punjabi	Interpreter/Translator	Husain, Tabbasum	410-336-9755; 410-465-8767	1063	AA Co., Balto. Co., Balto City, Calvert, Frederick, Garrett, Harford, Howard, Kent, Montgomery, Prince Georges, Queen Annes, St. Marys, Somerset, Talbot, Washington, Wicomico and Worcester Counties
Punjabi	Interpreter/Translator	Khan, Aqib	240-485-4660	2007	All Maryland Counties

Punjabi	Interpreter/Translator	Raees, Bushra	443-520-5625	1114	Baltimore City, AA, Baltimore, Harford, Howard, Montgomery and Prince George's Counties
Punjabi	Interpreter/Translator	Raja, Uzma	443-465-9028; 410-298-1500	1117	Baltimore City, Baltimore and Howard Counties
Punjabi (Urdu, Hindi)	Interpreter/Translator	Sheikh, Imran	443-797-7471	2076	All Maryland Counties
Punjabi	Interpreter	Usman Ali Khan, Sardar	240-421-0403	1658	All Maryland Counties
Punjabi	Interpreter/Translator	Waseem, Maqbool	443-929-3991	1675	Anne Arundel, Baltimore Co, Baltimore City, Calvert, Caroline, Frederick, Howard and Kent Counties.
Punjabi	Interpreter	Zahoor, Amjad	443-904-2244	1980	All Maryland Counties
Pushto	Interpreter/Translator	Husain, Tabbasum	410-336-9755; 410-465-8767	1063	AA Co., Balto. Co., Balto City, Calvert, Frederick, Garrett, Harford, Howard, Kent, Montgomery, Prince Georges, Queen Annes, St. Marys, Somerset, Talbot, Washington, Wicomico and Worcester Counties
Romanian	Interpreter/Translator	Scutaru-Andor, Cecilia	240-522-7684;412-290-3682	1132	All Maryland Counties
Russian	Interpreter/Translator	Abdullaev, Amanulla	703-953-6397	1001	All Maryland Counties
Russian	Interpreter/Translator	Braslavsky, Inna	443-831-3695, 410-440-0930, 410-526-0598	1017	Interpreter: Anne Arundel, Baltimore City, Baltimore Co., Carroll, Frederick, Harford, Howard, Montgomery, Prince George's counties. Translator: All Maryland counties.
Russian	Interpreter/Translator	Braslavsky, Milana	410-440-0930; 443-831-3695; 410-526-0598	1018	All Maryland Counties
Russian	Interpreter/Translator	Bryant, Anna	410-530-7196	1020	Baltimore City and All Maryland Counties
Russian	Interpreter/Translator	Hennessey, Dina	410-206-4252	1058	All Maryland Counties
Russian	Interpreter/Translator	Immerman, Mikhail	301-980-6352	1065	Anne Arundel, Baltimore County, Balto. City, Howard, Montgomery and PG Counties
Russian	Interpreter/Translator	Lagutin, Steven Alexander	301-917-4614	1077	All Maryland Counties
Russian	Interpreter/Translator	Petrosyan, Tatiana	240-938-1012	1110	All Maryland Counties
Russian	Interpreter/Translator	Rahimova, Saodat	443-823-6889	1968	All Maryland Counties
Russian	Interpreter	Sabirova, Dilnoza	443-866-4016	2048	Baltimore County, Baltimore City, Carroll, Cecil, Harford, Howard, Montgomery
Russian	Interpreter/Translator	Shell, Larysa	410-882-8721; 443-901-0206	1135	All Maryland Counties
Russian	Interpreter/Translator	Sher, Tanya	443-803-5826	1464	Baltimore Co, Baltimore City and Howard Counties.
Russian	Interpreter/Translator	Sokolov, Yelena	410-493-0164	1137	All Maryland Counties
Russian	Interpreter/Translator	Stewart-Hilkert, Katherine	301-684-2715; 813-405-9732	1343	All Maryland Counties
Russian	Interpreter	Tsymbal, Karina	301-691-8396	2009	Baltimore Co, Baltimore City, Calvert, Frederick, Montgomery, Prince George's, Queen Anne's and Washington Counties.
Serbian	Translator	Babcock, Maida	240-476-0192	1012	Allegany, AA, Calvert, Caroline, Carroll, Cecil, Charles, Dorchester, Garrett, Harford, Kent, St. Mary's, Somerset, Talbot, Washington, Wicomico and Worcester Counties

Serbian	Interpreter/Translator	Babcock, Maida	301-251-0540	1012	Baltimore City, Baltimore, Howard, Montgomery, PG, Queen Anne's Counties
Serbian	Interpreter/Translator	Spiler Jenkins, Mojca	410-585-7066	1951	Anne Arundel, Baltimore Co, Baltimore City, Harford and Howard Counties
Sinhalese	Interpreter/Translator	Obe, Kamini	301-760-6691	2031	Baltimore City, Frederick, Howard, Montgomery and Prince George's Counties
Siraiki	Interpreter/Translator	Raja, Uzma	443-465-9028; 410-298-1500	1117	Baltimore City, Baltimore and Howard Counties
Siyin	Interpreter/Translator	Kimlai, Kam	443-629-9947	1926	All Maryland Counties
Slovenian	Interpreter/Translator	Spiler Jenkins, Mojca	410-585-7066	1951	Anne Arundel, Baltimore Co, Baltimore City, Harford and Howard Counties
Somali	Interpreter/Translator	Salhan, Deca	202-368-1966	1717	All Maryland Counties
Spanish	Interpreter/Translator	Abaracon, Margarita	202-500-6332; 202-243-0117	1649	Anne Arundel, Baltimore Co, Baltimore City, Calvert, Howard, Montgomery, Prince George's and St. Mary's Counties.
Spanish	Interpreter	Acosta Gonzales, Christopher	443-414-9527	1888	Anne Arundel, Baltimore Co, Baltimore City, Carroll, Harford and Howard Counties
Spanish	Interpreter	Adames, Jorgenia	202-449-2251	2035	Prince George's County
Spanish	Interpreter/Translator	Aguilar, Dendry	301-434-4877	2037	Allegany, Anne Arundel, Caroline, Carroll, Charles, Frederick, Howard, Kent, Montgomery, Prince George's, Queen Anne's and St. Mary's Counties.
Spanish	Interpreter/Translator	Aguilar, Maricela	240-640-5902	2047/2003	All Maryland Counties
Spanish	Interpreter/Translator	Alcantara, Angelina	301-536-1142	1687	All Maryland Counties
Spanish	Interpreter/Translator	Alcantara, Edison	240-470-3272	1652	All Maryland Counties
Spanish	Interpreter/Translator	Alcantara, Elmer	240-535-2038	1948	All Maryland Counties
Spanish	Interpreter/Translator	Alcantara, Lenin	301-760-0522	1682	All Maryland Counties
Spanish	Interpreter	Alcantara, Paola	347-469-7287	1697	All Maryland Counties
Spanish	Interpreter/Translator	Alcantara, Rosa	240-424-2074	2016	All Maryland Counties
Spanish	Interpreter/Translator	Alma, Yeny M.	240-441-9793	2052	Anne Arundel, Baltimore City, Baltimore County, Frederick, Howard, Montgomery, and Prince George's counties.
Spanish	Interpreter/Translator	Alonso, Arianna	410-963-0054	2070	All Maryland Counties
Spanish	Interpreter/Translator	Alvarez, Daniel	410-693-5482	1759	All Maryland Counties
Spanish	Interpreter/Translator	Alvarez, Diana	443-994-1311	2008	All Maryland Counties
Spanish	Interpreter/Translator	Alvarez, Juan	443-994-1337; 410-263-3855	1720	Baltimore City and All Maryland Counties

Spanish	Interpreter/Translator	Alvarez, Lorenz	202-810-4323	1679	Anne Arundel, Baltimore Co, Baltimore City, Calvert, Carroll, Charles, Frederick, Howard, Kent, Montgomery, Prince George's, Queen Anne's and St. Mary's Counties.
Spanish	Interpreter/Translator	Alvord, Leidy	202-427-1880	1894	Allegany, Anne Arundel, Baltimore Co, Baltimore City, Carroll, Frederick, Howard, Montgomery, Prince George's and Washington Counties.
Spanish	Interpreter/Translator	Amaya-Ortez, Dany	240-440-0740	1007	All Maryland Counties
Spanish	Interpreter/Translator	Arevalo, Jose	240-304-1876	1700	All Maryland Counties
Spanish	Interpreter/Translator	Arevalo, Karen	240-938-8975	1877	All Maryland Counties
Spanish	Interpreter/Translator	Argueta, Henry	240-393-1971; 301-367-6384	1663	All Maryland Counties
Spanish	Interpreter/Translator	Arias, Henry	240-731-7607	1852	All Maryland Counties
Spanish	Interpreter/Translator	Arias, Maritza	410-279-4923	2023	Allegany, Anne Arundel, Baltimore Co, Baltimore City, Calvert, Carroll, Frederick, Howard, Montgomery, Prince George's and Wicomico Counties.
Spanish	Interpreter/Translator	Aronez, Amy M.	301-538-5139	1149	All Maryland Counties
Spanish	Interpreter/Translator	Aronez, Nancy	240-370-5193	1666	Allegany, Anne Arundel, Baltimore Co, Baltimore City, Calvert, Carroll, Frederick, Howard, Montgomery, Prince George's and Washington Counties.
Spanish	Interpreter/Translator	Arreaza, Gloria	301-571-2384; 301-537-4946	1748	Montgomery and Prince George's Counties.
Spanish	Translator	Arreaza, Gloria	301-571-2384; 301-537-4946	1748	Anne Arundel, Baltimore Co, Baltimore City, Howard, Montgomery and Prince George's Counties.
Spanish	Interpreter/Translator	Aspiazu, Bryan	301-366-3269	1940	All Maryland Counties
Spanish	Interpreter/Translator	Aspiazu, Paulina	240-832-4648; 443-370-2271	1842	All Maryland Counties
Spanish	Interpreter/Translator	Auffarth, Dawn	410-558-2886; 410-419-6883	1955	All Maryland Counties
Spanish	Interpreter/Translator	Ayuso, Maria	410-660-3394	1011	All Maryland Counties
Spanish	Interpreter/Translator	Bachez, Julius	540-429-5631	1978	All Maryland Counties
Spanish	Interpreter/Translator	Barreto, Marco	240-620-5740; 301-433-4054	1013	All Maryland Counties
Spanish	Interpreter/Translator	Barrios, Noelia	240-472-7520	1960	Baltimore City, Cecil, Frederick, Montgomery and Prince George's Counties
Spanish	Interpreter/Translator	Batista, Jose	571-432-9141	1846	All Maryland Counties
Spanish	Interpreter/Translator	Beauchamp, Patricia	240-224-7975	1670	Montgomery County
Spanish	Interpreter/Translator	Bentura, Jose	240-832-4648; 301-579-3366	1656	All Maryland Counties
Spanish	Interpreter	Berman, Cecilia	443-621-3404	2033	All Maryland Counties

					Allegany, Anne Arundel, Baltimore Co, Baltimore City, Calvert, Caroline, Carroll, Cecil, Charles, Dorchester, Frederick, Harford, Howard, Kent, Montgomery, Prince George's, Queen Anne's, St. Mary's, Talbot and Washington Counties.
Spanish	Interpreter/Translator	Botello, Carlos	301-898-6666; 301-355-9082	1989	
Spanish	Interpreter/Translator	Bradford, Garrett	210-240-0972	2075	All Maryland Counties
Spanish	Interpreter/Translator	Bruno, Maria Graciela	240-401-9559	1019	Frederick, Montgomery and PG Counties
Spanish	Interpreter/Translator	Burack, Maria Gallego	301-792-2568; 301-320-2423	1021	All Maryland Counties
Spanish	Interpreter/Translator	Burdin, Joy	301-467-1151	1977	All Maryland Counties
Spanish	Interpreter/Translator	Burke, Elisa	443-310-7972	1562	Anne Arundel, Baltimore Co, Baltimore City, Carroll, Frederick, Howard, Montgomery, Prince George's, Queen Anne's and St. Mary's Counties.
Spanish	Interpreter/Translator	Bustos-Romani, Marco	301-512-7756	2019	All Maryland Counties
Spanish	Interpreter/Translator	Cabrera, Roger	240-426-0044	1949	All Maryland Counties
Spanish	Interpreter/Translator	Caceres, Carlos	240-641-3446; 240-669-8800; 240-221-3172	1987	Anne Arundel, Baltimore Co, Baltimore City, Frederick, Howard, Montgomery and Prince George's Counties.
Spanish	Interpreter/Translator	Cajahuaranga Schreiber, Yura	301-312-0948	2032	Frederick and Montgomery Counties
Spanish	Interpreter/Translator	Cajigas, Jorge	443-416-4806	1659	All Maryland Counties
Spanish	Interpreter/Translator	Calderon, Dolores	240-401-4045	1645	All Maryland Counties
Spanish	Interpreter/Translator	Calle, Jenny	443-764-1525	1930	All Maryland Counties
Spanish	Interpreter/Translator	Campbell DaSilva, Dorianne	240-418-6123	1959	All Maryland Counties
Spanish	Interpreter/Translator	Campos Vasquez, Jennifer	301-232-4281	1732	All Maryland Counties
Spanish	Interpreter	Candia, Miriam	443-415-5797; 443-226-1939	1999	Baltimore Co, Baltimore City, Carroll, Frederick, Harford, Howard, Kent, Montgomery, Prince George's and Washington Counties.
Spanish	Interpreter/Translator	Carnero Miraval, Nory	301-760-8537	1998	All Maryland Counties
Spanish	Interpreter/Translator	Carney, Giovanna	240-270-3029	1754	Charles and Prince George's Counties.
Spanish	Interpreter/Translator	Caro Rodriguez, Jaime	301-787-0775	1958	All Maryland Counties
Spanish	Interpreter/Translator	Carrasco, Willy	301-602-3305	1023	All Maryland Counties
Spanish	Interpreter/Translator	Carrion, Daniel	443-682-3582	1755	All Maryland Counties
Spanish	Interpreter/Translator	Carrion, Miriam	443-983-2414	1024	All Maryland Counties
Spanish	Interpreter/Translator	Castelan, Rosalia	443-531-1614	1665	Anne Arundel, Baltimore City and Baltimore Counties.
Spanish	Interpreter/Translator	Castellanos, Jaime	240-463-0204; 301-598-8838	1025	All Maryland Counties
Spanish	Interpreter/Translator	Castillo, Emely	301-821-0903	1684	All Maryland Counties

Spanish	Interpreter/Translator	Castillo Vigo, Alicia	443-462-8268	1892	Anne Arundel, Baltimore Co, Howard, Montgomery, Prince George's, Queen Anne's and Talbot Counties
Spanish	Interpreter/Translator	Castro-Conroy, Carmen	301-216-2415	1026	Montgomery County
Spanish	Interpreter/Translator	Cercado, Melisa	240-893-3822	1738	All Maryland Counties
Spanish	Interpreter/Translator	Cermeno, Wendy	240-601-9154	1681	All Maryland Counties
Spanish	Interpreter/Translator	Chacon Silva, Vivian	301-213-1550	1730	All Maryland Counties
Spanish	Interpreter/Translator	Chiliquinga Flores, Lenin	240-550-2091	1757	Anne Arundel, Baltimore Co, Baltimore City, Frederick, Prince George's and Washington Counties.
Spanish	Interpreter/Translator	Chirino Sanchez, Sorayita	240-674-5004; 301-432-4883	1749	Frederick, Montgomery and Washington Counties.
Spanish	Interpreter/Translator	Cintron, Denise	202-706-9145; 240-838-0518	1029	All Maryland Counties
Spanish	Interpreter/Translator	Conde, Ricardo	202-359-0550	1733	All Maryland Counties
Spanish	Translator	Conde-Medina, Sandra	301-792-0756	1030	Allegany, AA, Calvert, Caroline, Cecil, Charles, Dorchester, Garrett, Harford, Howard, Kent, Queen Anne's, St. Mary's, Somerset, Talbot, Washington, Wicomico & Worcester Counties
Spanish	Interpreter/Translator	Conde-Medina, Sandra	301-792-0756	1030	Baltimore County, Frederick, Montgomery and PG Counties
Spanish	Interpreter/Translator	Contreras, Raphael	240-551-1189	1751	All Maryland Counties
Spanish	Interpreter/Translator	Cordero, Salvador	443-851-0985; 410-789-7907	1031	Anne Arundel, Baltimore County, Baltimore City, Harford & Howard counties
Spanish	Interpreter/Translator	Cordoba Garcia, Angi	301-747-8155	2034	Frederick, Montgomery and Washington Counties.
Spanish	Interpreter/Translator	Costa, Nieves Valdes	301-370-7054; 301-527-0999	1145	All Maryland Counties
Spanish	Interpreter/Translator	Cotto, Sixto	202-905-6431	1875	All Maryland Counties
Spanish	Interpreter/Translator	Coughlin, James	571-505-5738; 703-647-9275	1646	Anne Arundel, Calvert, Charles, Frederick, Howard, Montgomery and Prince George's Counties.
Spanish	Interpreter	Crisanto-Rochez, Teresa	240-626-5457	1668	Baltimore Co, Baltimore City, Carroll, Frederick, Howard, Montgomery, Prince George's and Washington Counties.
Spanish	Interpreter	Cruz, Carolina	202-747-8068	1870	Anne Arundel, Baltimore Co, Baltimore City, Howard, Montgomery, Prince George's, Queen Anne's and Talbot Counties.
Spanish	Interpreter/Translator	Cruz, Maria I.	443-345-7912	2061	Anne Arundel Co., Baltimore Co., Baltimore City
Spanish	Interpreter/Translator	Cuellar, Lucy	410-340-8849	1897	Anne Arundel, Baltimore Co, Baltimore City, Cecil, Harford, Howard, Montgomery and Prince George's Counties.
Spanish	Interpreter/Translator	Delcid, Grettell	240-818-1358	2054	Frederick, Montgomery and Washington County.
Spanish	Interpreter/Translator	Del Rio, Mildred	240-441-6924	1895	All Maryland Counties

Spanish	Interpreter/Translator	Zimmer, Maria	410-558-2886; 443-939-2530	1034	Baltimore City, Baltimore County
Spanish	Interpreter	Diaz Paredes, Maria	240-418-5158	1945	Frederick, Montgomery and Prince George's Counties
Spanish	Interpreter/Translator	Diaz Rueda, Jose	301-437-6875	1981	All Maryland Counties
Spanish	Interpreter/Translator	Donayre, Alberto	301-305-7122	1654	Frederick, Montgomery, Prince George's and Washington Counties.
Spanish	Interpreter/Translator	Donayre, Carmen	301-946-1175; 301-910-4717	1036	Frederick, Montgomery and PG Counties
Spanish	Interpreter/Translator	Donayre, Mariana	240-547-8838	2018	Anne Arundel, Frederick, Howard, Montgomery and Prince George's Counties
Spanish	Interpreter/Translator	Donayre-Perez, Eduardo	240-472-8481	1969	Anne Arundel, Baltimore Co, Frederick, Howard, Montgomery, Prince George's and Washington Counties
Spanish	Interpreter/Translator	Dorado Chumpitaz, Katherine	240-618-4080	1953	All Maryland Counties
Spanish	Interpreter/Translator	Douglas, Alexandra	240-481-9249	1037	All Maryland Counties
Spanish	Interpreter/Translator	Elgaard, Esperanza	240-604-3717	1669	All Maryland Counties
Spanish	Interpreter/Translator	Erroa, Carlos	240-893-0173	1753	All Maryland Counties
Spanish	Interpreter/Translator	Erroa-Soto, Teresa	202-758-8639	1039	All Maryland Counties
Spanish	Interpreter/Translator	Esperanza Eguizabal, Melissa	240-280-4768	1860	All Maryland Counties
Spanish	Interpreter/Translator	Espinoza-Magana, Jose	240-723-2579	1731	All Maryland Counties
Spanish	Interpreter/Translator	Evans, Vivian	202-255-5838	1041	All Maryland Counties
Spanish	Interpreter/Translator	Feldman, Antonia J.	301-742-2090; 301-571-0062	1044	Frederick, Montgomery, Prince George's and Washington Counties
Spanish	Interpreter	Figueroa, Daniela	301-788-0529	1881	Anne Arundel, Carroll, Frederick, Howard, Montgomery and Washington Counties.
Spanish	Interpreter/Translator	Flor, Diana	301-991-6457	1046	All Maryland Counties
Spanish	Interpreter/Translator	Flor, Maria	240-422-6577	1639	Allegany, Anne Arundel, Baltimore Co, Baltimore City, Calvert, Carroll, Cecil, Frederick, Garrett, Harford, Howard, Montgomery, Prince George's, Washington, Wicomico and Worcester Counties.
Spanish	Interpreter/Translator	Flores, Jacquelyne	301-343-1612	1651	All Maryland Counties
Spanish	Interpreter/Translator	Flores, Karla	443-324-5107	1726	All Maryland Counties
Spanish	Interpreter/Translator	Flores, Luis F.	240-252-0643	2049	All Maryland Counties
Spanish	Interpreter/Translator	Flores, Yanira	240-277-7783	1964	Frederick, Montgomery and Prince George's Counties
Spanish	Interpreter/Translator	Flores Sanchez, Blanca	301-871-0574	2015	Anne Arundel, Baltimore City, Charles, Frederick, Montgomery, Prince George's and Washington Counties
Spanish	Interpreter/Translator	Fonseca, Edward	443-993-1870	1728	All Maryland Counties

Spanish	Interpreter/Translator	Franco, Maria	240-476-6018	1691	Frederick, Howard, Montgomery and Prince George's Counties.
Spanish	Interpreter/Translator	Fuentes, Jairo	301-219-2216	1973	All Maryland Counties
Spanish	Interpreter/Translator	Fuentes, Lorena	301-537-4911	1047	Montgomery and Prince George's Counties
Spanish	Interpreter/Translator	Gallozo, Juan	240-476-0308	1640	All Maryland Counties
Spanish	Interpreter/Translator	Gallozo, Maria	240-505-3990	1048	All Maryland Counties
Spanish	Interpreter/Translator	Galo, Martha	240-838-8131	1947	All Maryland Counties
Spanish	Interpreter/Translator	Garcia, Fred	301-237-7819	1752	All Maryland Counties
Spanish	Interpreter/Translator	Garcia, Jenny	240-543-3589	2078	Frederick, Montgomery, Prince George's counties and Baltimore City
Spanish	Interpreter/Translator	Garcia Duenas, Flor	240-461-9136	1750	All Maryland Counties
Spanish	Interpreter/Translator	Gomez Ruiz, Claudia	443-982-8182	1053	Anne Arundel, Baltimore Co, Baltimore City, Montgomery and Prince George's Counties.
Spanish	Interpreter/Translator	Gomez, Nora	410-812-4812	1721	Baltimore City, AA, Baltimore, Carroll, Harford, Montgomery and PG Counties
Spanish	Interpreter/Translator	Gonzalez, Elmer	301-257-1088	1725	All Maryland Counties
Spanish	Interpreter/Translator	Gonzalez, Judith	301-642-7431	2020	Montgomery and Prince George's Counties
Spanish	Interpreter/Translator	Gonzalez Garrido, Aymee	443-521-1139	2025	Caroline, Dorchester, Queen Anne's, Talbot and Wicomico Counties
Spanish	Interpreter	Gordillo, Solmar	571-432-9141	1667	All Maryland Counties
Spanish	Interpreter	Greer, Melida	202-438-1150	1927	Frederick, Montgomery and Prince George's Counties
Spanish	Interpreter	Guerra Sandoval, Walter	443-814-5614	2055	All Maryland Counties
Spanish	Interpreter/Translator	Guzman, Alexander	240-474-3589	2051	All Maryland Counties
Spanish	Interpreter/Translator	Hernandez, Fidias	410-585-7382	1997	All Maryland Counties
Spanish	Interpreter/Translator	Hernandez, Sandra	202-246-0810	1962	All Maryland Counties
Spanish	Interpreter/Translator	Hernandez- Monje, Blanca	240-350-8092	1883	All Maryland Counties
Spanish	Interpreter/Translator	Hoath-Perez, Maribeth (Mary)	240-764-9094	1699	Frederick and Mongtomery Counties
Spanish	Interpreter/Translator	Hosking Jr, John	240-605-7590	1061	Anne arundel, Baltimore City, Baltimore County, Howard, Montgomery & Prince George's Counties
Spanish	Interpreter/Translator	Hughes, David	201-873-6046, 703-828-7726	2073	Allegany, Anne Arundel, Baltimore, Calvert, Carroll, Cecil, Frederick, Hardord, Howard, Kent, Montgomery, Prince George's, St. Mary's counties and Baltimore City.

Spanish	Interpreter/Translator	Iglesias, Xiomara Lorena	240-398-1058; 301-879-7095	1064	All Maryland Counties
Spanish	Interpreter/Translator	Jackson, Elisa	571-243-5726	1884	Baltimore Co, Baltimore City, Frederick, Howard, Montgomery and Washington Counties.
Spanish	Interpreter/Translator	Javier Guerrero, Pedro	240-354-3501; 301-588-2400	1943	All Maryland Counties
Spanish	Interpreter/Translator	Jerez Lopez, Jenifer	240-515-2163	2010	All Maryland Counties
Spanish	Interpreter	Johnson, Kelleigh	443-845-6008	2074	Anne Arundel, Baltimore, Harford, Howard counties and Baltimore City.
Spanish	Interpreter/Translator	Juarez Piox, Evelyn	703-505-1492	2079	All Maryland Counties
Spanish	Interpreter/Translator	Knight, Gary	202-549-9749	1952	All Maryland Counties
Spanish	Interpreter/Translator	Lainez, Karla	301-686-4293	1845	Allegany, Anne Arundel, Baltimore Co, Baltimore City, Frederick, Harford, Howard, Montgomery and Prince George's Counties.
Spanish	Interpreter/Translator	Lazaro Ceron, Jennifer	240-477-7289; 240-780-2920	1939	Anne Arundel, Baltimore City, Carroll, Charles, Frederick, Garrett, Harford, Howard, Montgomery, Prince George's and Washington Counties.
Spanish	Interpreter/Translator	Lemus, Leslie	240-444-5678	1701	All Maryland Counties
Spanish	Interpreter/Translator	Lev, Miriam	240-389-7500	2000	Anne Arundel, Carroll, Howard, Montgomery, Prince George's, Queen Anne's and St. Mary's Counties.
Spanish	Translator	Libanati, Cesar	301-920-1987	1082	Allegany, Calvert, Caroline, Carroll, Cecil, Charles, Dorchester, Calvert, Harford, Kent, Queen Anne's, St. Mary's, Somerset, Talbot, Washington, Wicomico and Worcester Counties
Spanish	Interpreter/Translator	Libanati, Cesar	301-920-1987	1082	Baltimore City, Anne Arundel, Baltimore, Howard, Montgomery and Prince George's Counties
Spanish	Interpreter/Translator	Lizama, Marcela	301-910-8753	1716	Calvert, Charles, Howard, Montgomery, PG and St. Mary's Counties
Spanish	Interpreter/Translator	Lizardo-Case, Jomalis	513-884-1984; 301-220-3852	1810	Howard, Montgomery and Prince George's Counties
Spanish	Interpreter/Translator	Llerena, Alexandra	240-832-4648	1661	All Maryland Counties
Spanish	Interpreter/Translator	Llerena, Eddie Javier	240-286-7546	1084	Baltimore City, AA, Carroll, Charles, Frederick, Harford, Howard, Montgomery, Prince George's, Washington, and Wicomico Counties
Spanish	Interpreter/Translator	Llerena, Jorge Napoleon	240-832-0936	1085	AA, Baltimore, Carroll, Charles, Frederick, Harford, Howard, Montgomery, PG, Washington, Wicomico Counties and Baltimore City
Spanish	Interpreter/Translator	Llerena, Jorge Patricio	240-329-6243	1643	Allegany, Anne Arundel, Baltimore Co, Baltimore City, Calvert, Carroll, Cecil, Frederick, Garrett, Harford, Howard, Montgomery, Prince George's, Washington and Wicomico Counties.

Spanish	Interpreter/Translator	Londono Zapata, John	240-551-8563	1957	All Maryland Counties
Spanish	Interpreter/Translator	Lopez, Ingrid	301-335-3133	1983	All Maryland Counties
Spanish	Interpreter	Lopez, Rosa	240-381-7255	1992	All Maryland Counties
Spanish	Interpreter/Translator	Lucero Moran, Olivia	410-660-5277	1735	All Maryland Counties
Spanish	Interpreter/Translator	Luna, Ernesto	202-390-3736	1088	All Maryland Counties
Spanish	Interpreter/Translator	Marchan, Miguel	240-437-6751	1886	All Maryland Counties
Spanish	Interpreter	Marino, Jeniffer	240-701-3775; 240-249-0604	1742	All Maryland Counties
Spanish	Interpreter/Translator	Martinez, Carmen	443-570-5909	1961	Baltimore Co and Baltimore City.
Spanish	Interpreter/Translator	Martinez, Ricardo V.	240-423-8283	2050	All Maryland Counties
Spanish	Interpreter/Translator	Masset, Rocio	443-204-7382	1898	All Maryland Counties
Spanish	Interpreter/Translator	Maysonet, Alexandria	301-957-5695; 301-725-3991	1599	All Maryland Counties
Spanish	Interpreter/Translator	Medina, Nyl	301-717-0515	1092	Montgomery; Prince George's Counties
Spanish	Interpreter/Translator	Melendez, Jose	301-589-8456; 240-476-8171	1095	Baltimore City, AA, Baltimore, Frederick, Howard, Montgomery, PG Counties
Spanish	Interpreter	Mendez, Saul	410-908-4184	1976	All Maryland Counties
Spanish	Interpreter	Mendez Garza, Alida	301-788-0462; 301-525-7683	1941	Anne Arundel, Carroll, Frederick, Howard, Montgomery and Prince George's Counties.
Spanish	Interpreter/Translator	Mera, Rosa	240-515-3594	1097	All Maryland Counties
Spanish	Interpreter	Merino, Cesar	301-996-4281	1848	Anne Arundel, Baltimore Co, Baltimore City, Calvert, Frederick, Howard, Montgomery, Prince George's and Washington Counties.
Spanish	Translator	Merino, Cesar	301-996-4281	1848	All Maryland Counties
Spanish	Interpreter/Translator	Michael, Athalia	240-672-7623	1982	All Maryland Counties
Spanish	Interpreter/Translator	Milstein, Karina	240-838-1847	1849	Allegany, Anne Arundel, Calvert, Caroline, Carroll, Cecil, Frederick, Howard, Montgomery, Prince George's and Washington counties
Spanish	Interpreter/Translator	Montes, Luis	301-500-7191	2058	All Maryland Counties
Spanish	Interpreter/Translator	Morales, Yesenia	703-231-5960	1686	Baltimore City and Prince George's Counties.
Spanish	Interpreter/Translator	Morales, Yosy	443-962-7464	2066	Allegany, Anne Arundel, Baltimore City, Baltimore, Queen Anne's, St. Mary's, Somerset, Talbot, Washington, Wicomico, Worcester counties.
Spanish	Interpreter/Translator	Moreno, Edgar	240-876-0547	1857	All Maryland Counties

Spanish	Interpreter/Translator	Moreno Chavez, Ever	410-262-2505	2040	All Maryland Counties
Spanish	Interpreter/Translator	Moreno-Smith, Claudia	240-440-9497	1739	Carroll, Frederick, Howard, Montgomery and Prince George's Counties.
Spanish	Interpreter/Translator	Moreno-Weiner, Tania	301-318-8475; 240-876-0547	1885	All Maryland Counties
Spanish	Translator	Morin, Angela Elizabeth	410-703-9548	1101	Harford, Howard, Kent and Queen Anne's Counties
Spanish	Interpreter/Translator	Morin, Angela Elizabeth	410-703-9548	1101	Anne Arundel, Montgomery, PG Counties
Spanish	Interpreter/Translator	Muniz, Dayana	301-828-0974	2006	All Maryland Counties
Spanish	Interpreter/Translator	Munoz, Beatriz	240-429-6353	1876	Anne Arundel, Baltimore Co, Baltimore City, Calvert, Carroll, Cecil, Charles, Frederick, Garrett, Harford, Howard, Kent, Montgomery, Prince George's, Queen Anne's St. Mary's and Washington Counties.
Spanish	Interpreter/Translator	Munoz Valencia, Yessica	240-764-9598	1708	Anne Arundel, Calvert, Howard, Montgomery, and Prince George's counties
Spanish	Interpreter	Nadal, Mercedes	443-768-1737	1970	Anne Arundel, Baltimore Co, Baltimore City, Carroll, Frederick, Harford, Howard, Montgomery and Prince George's Counties
Spanish	Interpreter/Translator	Newcomb, Ismelda	443-614-7200	1718	Caroline, Dorchester, Queen Anne's, Somerset, Talbot, Wicomico and Worcester Counties
Spanish	Interpreter/Translator	Neyra, Milan	612-407-3264; 773-249-0543	2038	Anne Arundel, Baltimore Co, Baltimore City, Howard, Montgomery and Prince George's Counties.
Spanish	Interpreter/Translator	Noel, Giovanni	240-286-6868	2068	Anne Arundel, Baltimore City, Baltimore, Howard, Montgomery, Prince George's Counties.
Spanish	Interpreter/Translator	Nolasco-Cedillos, Maria	571-501-4684	1925	All Maryland Counties
Spanish	Interpreter/Translator	Olivas, Clara	301-318-0755	1859	All Maryland Counties
Spanish	Interpreter/Translator	Oliveri, Waleska	321-239-3354	1971	All Maryland Counties
Spanish	Translator	Ordorica, Salvador	949-232-9797; 800-460-1536 Ext 70	1868	All Maryland Counties
Spanish	Translator	Ortiz, Jose	240-855-5364	1107	All Maryland Counties
Spanish	Interpreter/Translator	Parraga-Toruno, Marta	301-448-9492; 301-963-5730	1108	Anne Arundel, Baltimore County, Baltimore City, Frederick, Harford, Howard, Montgomery, Prince George's Counties.
Spanish	Interpreter/Translator	Pedemonte, Helen	703-987-3014	2063	Charles and Montgomery Counties
Spanish	Interpreter/Translator	Peguero, Gabriel	301-379-3267	1696	All Maryland Counties
Spanish	Interpreter/Translator	Peguero, Henry	301-996-7907	1862	All Maryland Counties
Spanish	Interpreter/Translator	Peltier, Sandra	301-957-5980	1954	Frederick, Montgomery and Washington Counties.
Spanish	Interpreter/Translator	Pereira Martinez, Noe	443-224-5167	1698	All Maryland Counties

Spanish	Interpreter/Translator	Perez, Felipe	917-504-5388	1932	Anne Arundel, Baltimore Co and Baltimore City
Spanish	Interpreter/Translator	Perez, Juan	240-667-6569	2080	Baltimore, Frederick, Howard, Montgomery, Prince George's counties and Baltimore City.
Spanish	Interpreter/Translator	Peters, Matthew	410-924-4022	1993	Caroline, Dorchester and Talbot Counties
Spanish	Interpreter/Translator	Petrus, Darryn	410-978-5936	1524	All Maryland Counties
Spanish	Interpreter/Translator	Pichardo, Rosa	240-485-6562; 240-839-7693; 410-934-7144	1112	All Maryland Counties
Spanish	Interpreter/Translator	Plasencia Vallejo, Jovanny	240-766-8326	1734	All Maryland Counties
Spanish	Interpreter/Translator	Ponce, Gonzalo	202-342-7564; 202-746-1291	1642	All Maryland Counties
Spanish	Interpreter/Translator	Portela Garces, Guisela	240-406-0413	2012	All Maryland Counties
Spanish	Interpreter/Translator	Portillo de Argueta, Fanny	240-393-1971	1660	All Maryland Counties
Spanish	Interpreter	Quinonez-Pico, Viviana	301-536-6791	1715	All Maryland Counties
Spanish	Interpreter/Translator	Ramirez, Eddy	301-803-9246	1880	Allegary, Anne Arundel, Baltimore Co, Baltimore City, Frederick, Howard, Montgomery, Prince George's, Queen Anne's and St. Mary's Counties.
Spanish	Translator	Ramirez, Eddy	301-803-9246	1880	All Maryland Counties
Spanish	Interpreter/Translator	Ramos-Martinez, Cristelia	202-210-3541	1922	Anne Arundel, Montgomery and Prince George Counties
Spanish	Interpreter/Translator	Ramos-Sanchez, Luis	240-487-8889	1938	All Maryland Counties
Spanish	Translator	Rangel, Antonio	301-571-2384	1119	Baltimore City, anne Arundel, Baltimore, Carrol and Frederick Counties
Spanish	Interpreter/Translator	Rangel, Antonio	301-571-2384	1119	Howard, Montgomery and Prince George's Counties
Spanish	Interpreter/Translator	Renders Narvaez, Joyce	240-486-5374; 301-434-4877	1851	All Maryland Counties
Spanish	Interpreter/Translator	Reyes, Eydi	301-787-3146	1678	All Maryland Counties
Spanish	Interpreter/Translator	Reyes, Roberto	202-957-7057	1710	All Maryland Counties
Spanish	Interpreter/Translator	Reyes, Sandra	240-533-7768	1729	All Maryland Counties
Spanish	Interpreter/Translator	Reyes-Salazar, Abigail	240-486-6065	1120	Anne Arundel, Baltimore City, Frederick, Howard, Montgomery & Prince George's & St. Mary's Counties
Spanish	Interpreter/Translator	Riera Salarich, Ivette	720-999-5025	2067	Cecil, Kent, Queen Anne's and Washington Counties.
Spanish	Interpreter/Translator	Rivera, Alexandra	240-701-4388	1869	All Maryland Counties
Spanish	Interpreter/Translator	Robles, David	301-980-9174; 951-536-6823	1879	Anne Arundel, Baltimore City, Frederick and Howard Counties.
Spanish	Translator	Robles, David	301-980-9174; 951-536-6823	1879	All Maryland Counties
Spanish	Interpreter	Rodriguez Isaula, Daniela	757-753-1144	2059	All Maryland Counties

Spanish	Interpreter/Translator	Rodriguez, Fidel	240-498-4606; 301-515-8729	1121	Frederick, Montgomery and PG Counties
Spanish	Interpreter/Translator	Rodriguez, Ivan	410-917-2520 410-521-4826	1122	Allegany, Anne Arundel, Baltimore County, Baltimore City, Calvert, Carroll, Cecil, Frederick, Harford, Howard, Montgomery & Prince George's Counties
Spanish	Translator	Rodriguez, Maria	240-367-7750; 240-683-3633	1123	Allegany, Anne Arundel, Calvert, Caroline, Cecil, Charles, Dorchester, Frederick, Garrett, Kent, Queen Anne's, St. Mary's, Somerset, Talbot, Wicomico & Worcester Counties
Spanish	Interpreter/Translator	Rodriguez, Maria	240-367-7750; 240-683-3633	1123	Baltimore City, Baltimore, Carroll, Harford, Howard, Montgomery, PG & Washington Counties
Spanish	Interpreter/Translator	Rodriguez, Maribel	443-386-7177	1946	All Maryland Counties
Spanish	Interpreter/Translator	Rodriguez, Miguelina	240-506-1264	2028	Anne Arundel, Baltimore Co, Frederick, Howard, Montgomery and Prince George's Counties.
Spanish	Interpreter/Translator	Rodriguez, Olga	240-354-2006	1924	Anne Arundel, Calvert, Carroll, Frederick, Garrett, Howard, Montgomery and Prince George's Counties
Spanish	Interpreter	Rodriguez, Zoilo	301-323-5640	1705	All Maryland Counties
Spanish	Interpreter/Translator	Rojas, Liliana	240-447-0645	1995	Frederick, Montgomery and Prince George's Counties
Spanish	Interpreter/Translator	Romero, Mario	240-467-1258	1719	All Maryland Counties
Spanish	Interpreter/Translator	Romero, Rubymir	301-377-1419; 202-754-6602	1673	All Maryland Counties
Spanish	Interpreter/Translator	Rosario-Sanchez, Barbara	240-618-9325	1706	All Maryland Counties
Spanish	Interpreter	Ruiz, Ysola	240-832-7838	1127	Baltimore City, Baltimore County
Spanish	Interpreter/Translator	Ruiz, Ysola	240-832-7838	1127	Montgomery and Prince George's Counties
Spanish	Interpreter/Translator	Sagastume, Julia	240-437-1875	1956	Anne Arundel, Howard, Montgomery and Prince George's Counties
Spanish	Interpreter/Translator	Salas, Angel A.	301-804-8599	2056	All Maryland Counties
Spanish	Interpreter	Saldana-Santana, Alma	443-306-6920	2024	Baltimore Co, Baltimore City, Harford, Howard and Washington Counties
Spanish	Interpreter/Translator	Sanchez, Griselda	301-942-9404	2022	Baltimore Co, Baltimore City, Montgomery and Prince George's Counties
Spanish	Interpreter/Translator	Sanchez, Nelson	240-246-5268	1893	All Maryland Counties
Spanish	Interpreter/Translator	Sanchez, Nubia	410-736-2726	2060	Anne Arundel, Baltimore Co., Baltimore City, Carroll, Howard, Montgomery, Prince George's counties.
Spanish	Interpreter/Translator	Santana Cepeda, Frank	240-604-7762	1704	All Maryland Counties
Spanish	Interpreter	Saravia, Rene	240-338-8315	1131	Montgomery & Prince George's Counties
Spanish	Interpreter	Segovia, Ana L.	301-949-5465	2053	Allegany, Anne Arundel, Baltimore Co, Baltimore City, Charles Frederick, Harford, Howard, Montgomery, Prince George's, Washington, Wicomico Counties.

Spanish	Interpreter/Translator	Segura, Laura	301-221-6569	1133	Allegany, Anne Arundel, Baltimore Co, Baltimore City, Dorchester, Frederick, Harford, Howard, Kent, Montgomery, Prince George's, Queen Anne's, St. Mary's, Somerset, Talbot, Washington, Wicomico and Worcester Counties.
Spanish	Interpreter/Translator	Sena, Kenia	443-518-6388	1709	All Maryland Counties
Spanish	Interpreter/Translator	Shell, Larysa	410-882-8721; 443-901-0206	1135	All Maryland Counties
Spanish	Interpreter/Translator	Shuck, Maria-Teresa	301-514-1633; 240-566-4350	1653	Frederick and Washington County.
Spanish	Interpreter/Translator	Siliezar, Henry	301-760-9464	1950	All Maryland Counties
Spanish	Interpreter/Translator	Silva, Maria	202-495-9696	1979	Montgomery and Prince George's Counties
Spanish	Translator	Silva, Maria	202-495-9696	1979	All Maryland Counties
Spanish	Interpreter/Translator	Solano, Katherin	240-396-8622	1138	Baltimore County, AA, Baltimore, Montgomery, PG Counties
Spanish	Interpreter/Translator	Solorzano, Claudia	240-616-5002	1736	Allegany, Anne Arundel, Baltimore Co, Baltimore City, Calvert, Caroline, Carroll, Cecil, Charles, Dorchester, Harford, Howard, Montgomery, Prince George's, Queen Anne's, St. Mary's, Somerset, Talbot, Wicomico and Worcester Counties.
Spanish	Interpreter/Translator	Soriano, Jose A.	301-905-2740	2046	Anne Arrundel, Baltimore City, Baltimore County, Frederick, Howear, Montgomery, Prince George's
Spanish	Interpreter/Translator	Sorto Andrade, Karen	240-319-1354	1758	Anne Arundel, Montgomery and Prince George Counties
Spanish	Interpreter/Translator	Sosa, Janet	240-350-8171	1648	All Maryland Counties
Spanish	Interpreter/Translator	Spiler Jenkins, Mojca	410-585-7066	1951	Anne Arundel, Baltimore Co, Baltimore City, Harford and Howard Counties
Spanish	Interpreter/Translator	Sterling, William	240-893-7638	1140	Allegany, Anne Arundel, Baltimore Co, Baltimore City, Calvert, Caroline, Carroll, Cecil, Charles, Dorchester, Frederick, Garrett, Harford, Howard, Kent, Montgomery, Prince George's, Queen Anne's, St. Mary's and Washington Counties.
Spanish	Interpreter/Translator	Stevenson, Paul	410-476-7502	1915	Anne Arundel, Baltimore Co, Baltimore City, Carroll, Harford and Howard Counties
Spanish	Translator	Stover, Ana	443-386-8183	1141	Anne Arundel, Baltimore City, Baltmore, Carroll, Frederick, Howard, Montgomery and Prince George's Counties
Spanish	Interpreter/Translator	Suarez, Rebeca	240-595-0236	1986	All Maryland Counties
Spanish	Interpreter/Translator	Tavarez Pena, Elieser	703-309-0852	1743	All Maryland Counties
Spanish	Translator	Todd, Diezir	301-254-6039	2026	Anne Arundel, Baltimore City, Charles, Montgomery and Prince George's Counties
Spanish	Interpreter/Translator	Torres-Zelaya, Kimberly	301-996-6649	1963	Anne Arundel, Calvert, Charles, Frederick, Howard, Montgomery and Prince George's Counties.
Spanish	Interpreter/Translator	Toruno, Angie	240-793-4135; 301-515-8729	1934	Anne Arundel, Carroll, Frederick, Howard, Montgomery, Prince George's and Washington Counties.

Spanish	Interpreter/Translator	Trejos, Scarlet	443-600-9532	1688	All Maryland Counties
Spanish	Interpreter/Translator	Vaca, Giordano	202-373-2389	1923	Howard, Montgomery and Prince George's Counties
Spanish	Interpreter/Translator	Vaca, Wesley	301-455-1723	2005	Anne Arundel, Howard, Montgomery and Prince George's Counties
Spanish	Interpreter/Translator	Vail, Victorina	240-351-5828	1144	Baltimore City, Allegany, AA, Baltimore, Calvert, Frederick, Harford, Howard, Montgomery, PG and Wicomico Counties
Spanish	Interpreter/Translator	Valdez, Juan	301-275-7767	1741	Anne Arundel, Baltimore Co, Baltimore City, Howard, Montgomery and Prince George's Counties.
Spanish	Interpreter/Translator	Valdez, Manuel	301-357-4899	1671	Allegany, Anne Arundel, Baltimore Co, Calvert, Carroll, Cecil, Frederick, Harford, Howard, Montgomery and Prince George's Counties.
Spanish	Interpreter/Translator	Valentin, Jhosdye	301-500-7999	1972	All Maryland Counties
Spanish	Translator	Valladares, Reyna	301-755-8418	1146	Allegany, AA, Baltimore County, Baltimore City, Calvert, Carroll, Cecil, Harford, Montgomery and PG Counties
Spanish	Interpreter/Translator	Valladares, Reyna	301-755-8418	1146	Frederick, Howard, Montgomery and Prince George's Counties
Spanish	Interpreter/Translator	Vasquez, Alexi	301-318-0435	1847	All Maryland Counties
Spanish	Interpreter	Vasquez da Silva, Asia	240-273-2713	1933	Allegany, Anne Arundel, Baltimore Co, Baltimore City, Calvert, Carroll, Cecil, Charles, Frederick, Harford, Howard, Montgomery, Prince George's and Washington Counties.
Spanish	Interpreter/Translator	Velasquez, Sara	214-991-0993	1890	All Maryland Counties
Spanish	Interpreter/Translator	Ventura, Kelly	240-480-1303	1994	All Maryland Counties
Spanish	Interpreter	Vera, Jacinto	443-851-7113	1967	Baltimore Co, Baltimore City, Charles and Prince George's Counties.
Spanish	Interpreter/Translator	Vera, Jose	301-346-0911	1147	Anne Arundel, Baltimore Co, Baltimore City, Howard and Prince George's Counties.
Spanish	Interpreter/Translator	Villa Corta, Jessica	240-281-2914	1990	Anne Arundel, Baltimore Co., Baltimore City, Frederick, Howard, Montgomery, Prince George's counties.
Spanish	Interpreter/Translator	Wallach, Rosa	240-505-0790	1151	Balto. City, Anne Arundel, Baltimore, Caroline, Frederick, Howard, Montgomery and Prince George's Counties
Spanish	Interpreter/Translator	Wenig, Eileen Marcia	240-381-8851; 301-598-8838	1153	All Maryland Counties
Spanish	Interpreter	Winters, Merolyn	443-653-1753	1856	Anne Arundel, Baltimore Co, Baltimore City, Carroll, Cecil, Frederick, Harford, Howard and Montgomery Counties.
Spanish	Interpreter/Translator	Wright, Marina	410-417-8031	1155	Anne Arundel County
Spanish	Interpreter/Translator	Zevallos, Harold	240-938-9044	1891	Allegany, Anne Arundel, Baltimore Co, Baltimore City, Calvert, Carroll, Frederick, Harford, Howard, Montgomery and Prince George's Counties.
Swahili	Interpreter/Translator	Kayihura, Amani	443-635-8284	1674	All Maryland Counties
Swahili	Interpreter/Translator	Yahuma, Rosebelle	612-802-5201	1831	All Maryland Counties

Taiwanese	Interpreter/Translator	Li, Link	443-535-2708	1081	All Maryland Counties
Tedim	Interpreter/Translator	Kimlai, Kam	443-629-9947	1926	All Maryland Counties
Thai	Interpreter/Translator	Patamawenu, Nisara	301-253-5425; 240-899-0268	1676	All Maryland Counties
Tigrigna (Ethiopian)	Interpreter	Wolday, Aida	240-235-5545	2077	Baltimore, Howard, Montgomery, Prince George's counties and Baltimore City
Tigrigna (Ethiopian)	Translator	Zekiros, Astair	703-534-1722	1157	All Maryland Counties
Tigrigna (Ethiopian)	Interpreter/Translator	Zekiros, Astair	703-534-1722	1157	Anne Arundel, Baltimore County, Baltimore City, Calvert, Howard, Montgomery & Prince George's Counties
Turkish	Interpreter/Translator	Basar, Pinar	540-845-4706	1928	All Maryland Counties
Turkish	Interpreter/Translator	Belen, Ryan	410-215-3330; 410-551-8761	1015	All Maryland Counties
Turkish	Interpreter/Translator	Koksai, Huseyin	856-313-0738	2069	All Maryland Counties
Turkish	Interpreter/Translator	Diker, Vedat	301-728-0613; 301-881-7494	1035	All Maryland Counties
Ukrainian	Interpreter/Translator	Shell, Larysa	410-882-8721; 443-901-0206	1135	All Maryland Counties
Ukrainian	Interpreter/Translator	Sokolov, Yelena	410-493-0164	1137	All Maryland Counties
					All Maryland Counties
Urdu	Interpreter/Translator	Ahmed, Aqeel	443-799-6294	2014	All Maryland Counties
Urdu	Interpreter/Translator	Butt, Tariq	443-326-0559	1022	Anne Arundel, Baltimore County, Baltimore City, Kent, and Queen Anne's Counties
Urdu	Interpreter/Translator	Chaudhry, Halim Muhammad	410-446-5640	1027	Baltimore City, AA, Baltimore, Carroll, Frederick, Harford, Howard, Montgomery, PG and Washington Counties
Urdu	Interpreter/Translator	Faiz, Raja	443-465-8027; 410-298-1500	1042	Anne Arundel, Baltimore City, Baltimore Co and Howard Counties
Urdu	Interpreter/Translator	Husain, Syed	410-365-1550	1062	Baltimore City, AA, Baltimore, Carroll, Cecil, Frederick, Harford, Howard, Montgomery & PG Counties
Urdu	Interpreter/Translator	Husain, Tabbasum	410-336-9755	1063	AA Co., Balto. Co., Balto City, Calvert, Frederick, Garrett, Harford, Howard, Kent, Montgomery, Prince Georges, Queen Annes, St. Marys, Sumerset, Talbot, Washington, Wicomico and Worcester
					All Maryland Counties
Urdu	Interpreter/Translator	Khan, Aqib	240-485-4660	2007	All Maryland Counties
Urdu	Interpreter/Translator	Mohsin, Nadeem	410-900-5475	1099	All Maryland Counties
Urdu	Interpreter/Translator	Nadeem, Shamim	410-900-5474	1878	Baltimore Co and Baltimore City.
Urdu	Interpreter	Patel, Jay	410-504-3051	1855	All Maryland Counties
Urdu	Interpreter	Pilpile, Sabrin	443-251-9912	1921	All Maryland Counties
Urdu	Interpreter/Translator	Raees, Bushra	443-520-5625	1114	Baltimore City, AA, Baltimore, Harford, Howard, Montgomery and Prince George's Counties

Urdu	Interpreter/Translator	Raja, Ali	410-480-0099; 443-878-7024; 410-298-1500	1115	Anne Arundel, Baltimore City, Baltimore Co, Frederick and Howard Counties
Urdu	Interpreter/Translator	Raja, Uzma	443-465-9028; 410-298-1500	1117	Baltimore City, Baltimore and Howard Counties
Urdu (Hindi, Punjabi)	Interpreter/Translator	Sheikh, Imran	443-797-7471	2076	All Maryland Counties
Urdu	Interpreter	Usman Ali Khan, Sardar	240-421-0403	1658	All Maryland Counties
Urdu	Interpreter/Translator	Waseem, Maqbool	443-929-3991	1675	Anne Arundel, Baltimore Co, Baltimore City, Calvert, Caroline, Frederick, Howard and Kent Counties.
Urdu	Interpreter	Zahoor, Amjad	443-904-2244	1980	All Maryland Counties
Uzbek	Interpreter/Translator	Abdullaev, Amanulla	703-953-6397	1001	All Maryland Counties
Uzbek	Interpreter/Translator	Rahimova, Saodat	443-823-6889	1968	All Maryland Counties
Uzbek	Interpreter	Sabirova, Dilnoza	443-866-4016	2048	Baltimore County, Baltimore City, Carroll, Cecil, Harford, Howard, Montgomery
Uzbek	Interpreter/Translator	Tillyabaeva, Lola	646-409-6988	1942	All Maryland Counties
Vietnamese	Interpreter/Translator	Doan, Henry	301-217-9415	1874	Baltimore Co, Baltimore City, Frederick, Howard, Montgomery and Prince George's Counties.
Vietnamese	Interpreter/Translator	Saint Johns, Thanh Thanh Thi	240-415-0124; 240-586-0307	1128	Baltimore, Frederick, Montgomery, Washington Counties
Vietnamese	Interpreter/Translator	Tran, Khoa Dang	717-962-0404	2064	All Maryland Counties
Vietnamese	Interpreter/Translator	Vo, Thanh	410-404-6433	1920	All Maryland Counties
Vietnamese	Interpreter/Translator	Vu, Trung	202-409-3885	1150	All Maryland Counties
Zophei	Interpreter/Translator	Bawhrin, Joseph	240-381-4488	1702	All Maryland Counties