

St. Mary's County, MD

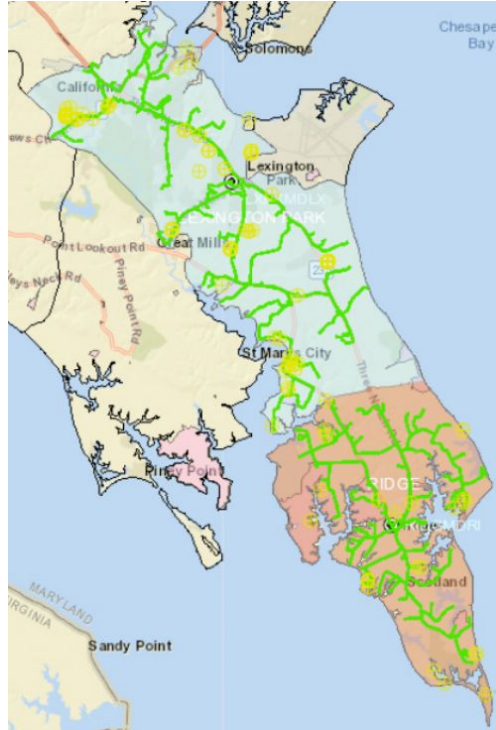
Bid Recommendation - PFSA - 1,2, and 3

11/8/22



Model Output - PFSA 1

Locations



Summary of measurements - PFSA 1

\$5.1M

Total Project Cost

94

Total Fiber Miles

239

Total un/derserved prems

\$2.6M

Verizon Contribution

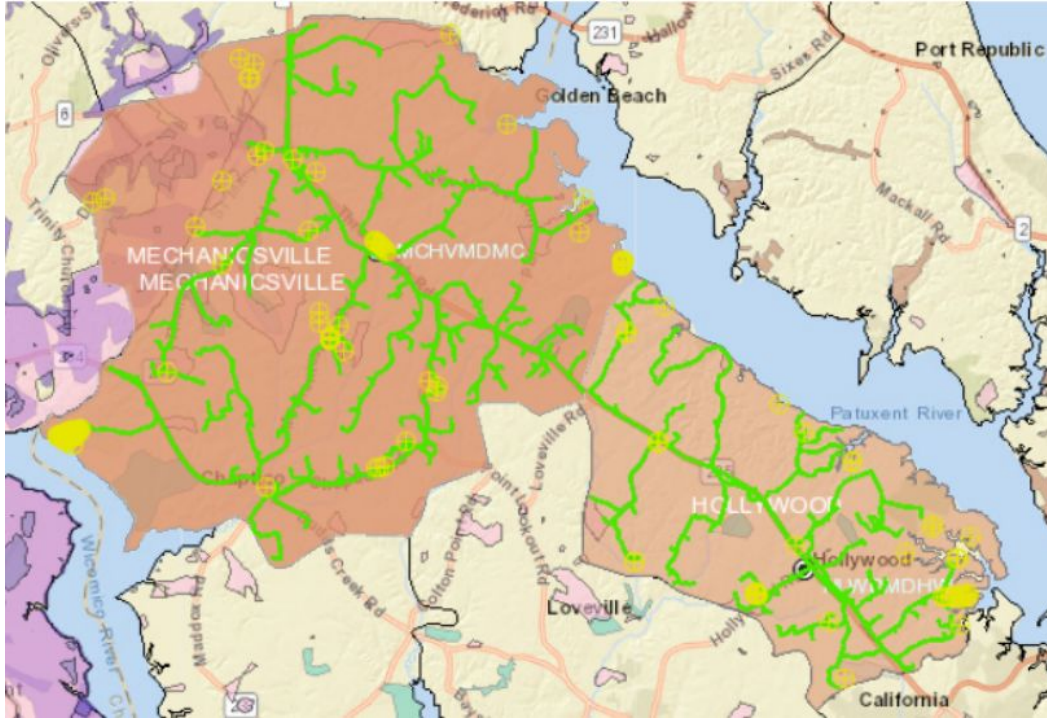
\$2.5M

Requested Subsidy



Model Output - PFSA 2

Locations and County



Summary of measurements

\$3.0M

Total Project Cost

157

Total Fiber Miles

405

Total un/derserved prems

\$1.5M

Verizon Contribution

\$1.5M

Requested Subsidy



Model Output - PFSA 3

Locations and County



Summary of measurements

\$4.3M

Total Project Cost

173

Total Fiber Miles

512

Total un/derserved prems

\$2.2M

Verizon Contribution

\$2.1M

Requested Subsidy



Connect Maryland Contemplates Partnerships and/or Local Involvement

Connect Maryland Application Guide

Evidence of Jurisdictional Partnership

Required Support Letter

Areas Covered and Prems Served ([C.1.a.2](#))

30 pts (portion)

Subarea Name	Population	Households	Businesses
XXXXXX	XXXX	XXXX	XX

Local Jurisdiction and Public Participation ([C.3](#))

- **Document local jurisdiction involvement in planning and implementation. ([C.3.a](#))** 10 pts
- **Verified financial commitment from local community ([C.3.b](#))** 20 pts (sliding scale starting at 5% of total project cost)

Narrative of benefit to local economy/community ([C.9.a](#))

5 pts

