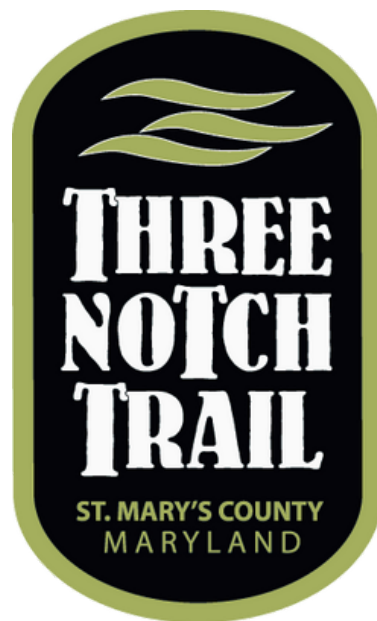


# Three Notch Trail Phase VII Updates

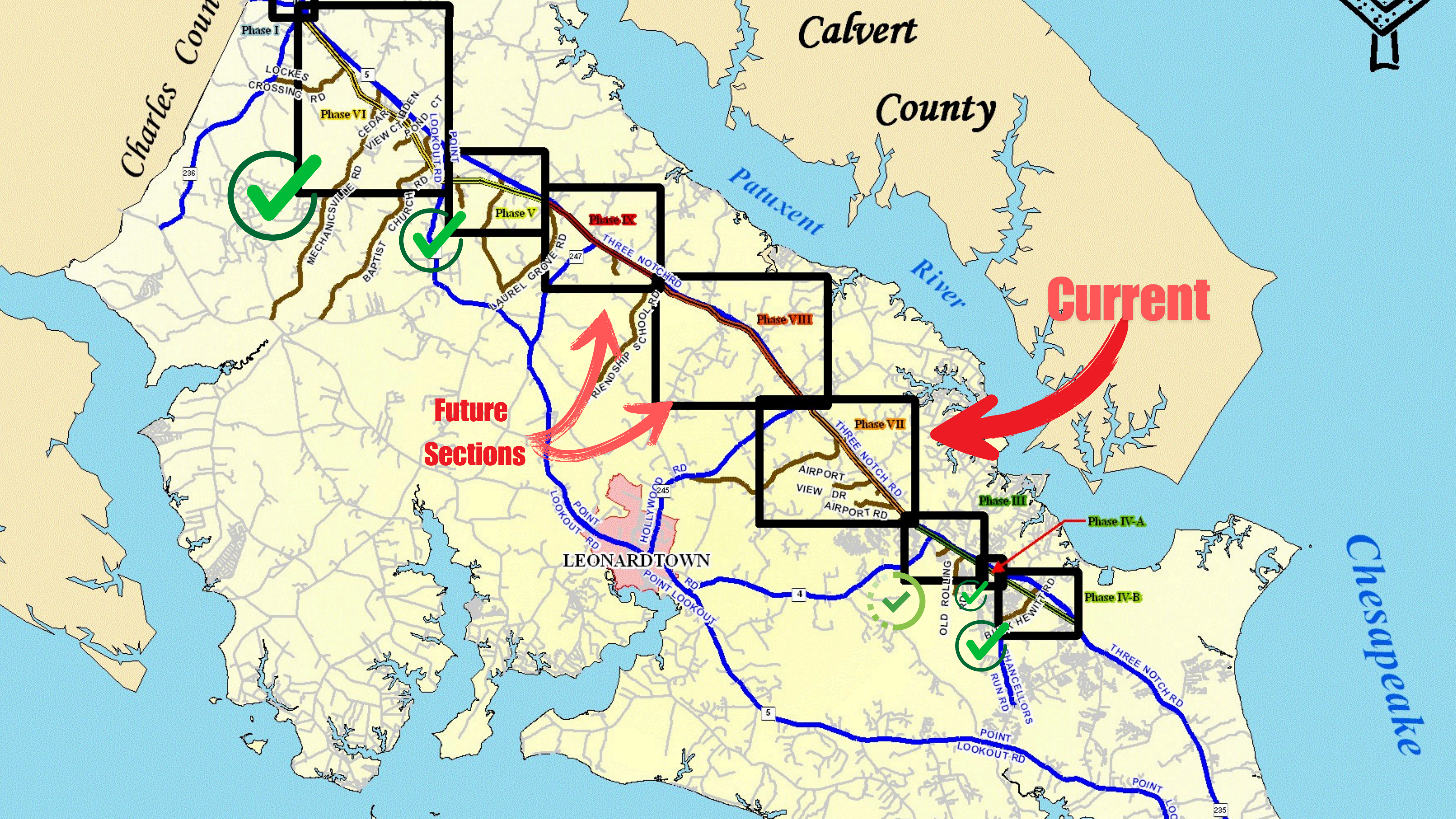




# Project Information

- The Three Notch Trail is a 10-foot wide asphalt, multi-use trail for both recreational and transportation uses. The trail is being constructed along the County Railroad Right of Way (ROW) spanning south from Hughesville in Charles County to Lexington Park at the Patuxent River Naval Air Station.
- The ROW has long been recommended for trail development and will serve as regional recreational, tourism and transportation corridor. The plan for the trail is contained in the Maryland State Transportation Plan, the 2022 Land Preservation, Parks and Recreation Plans and is also consistent with the County's Comprehensive Plan and Transportation Plan.



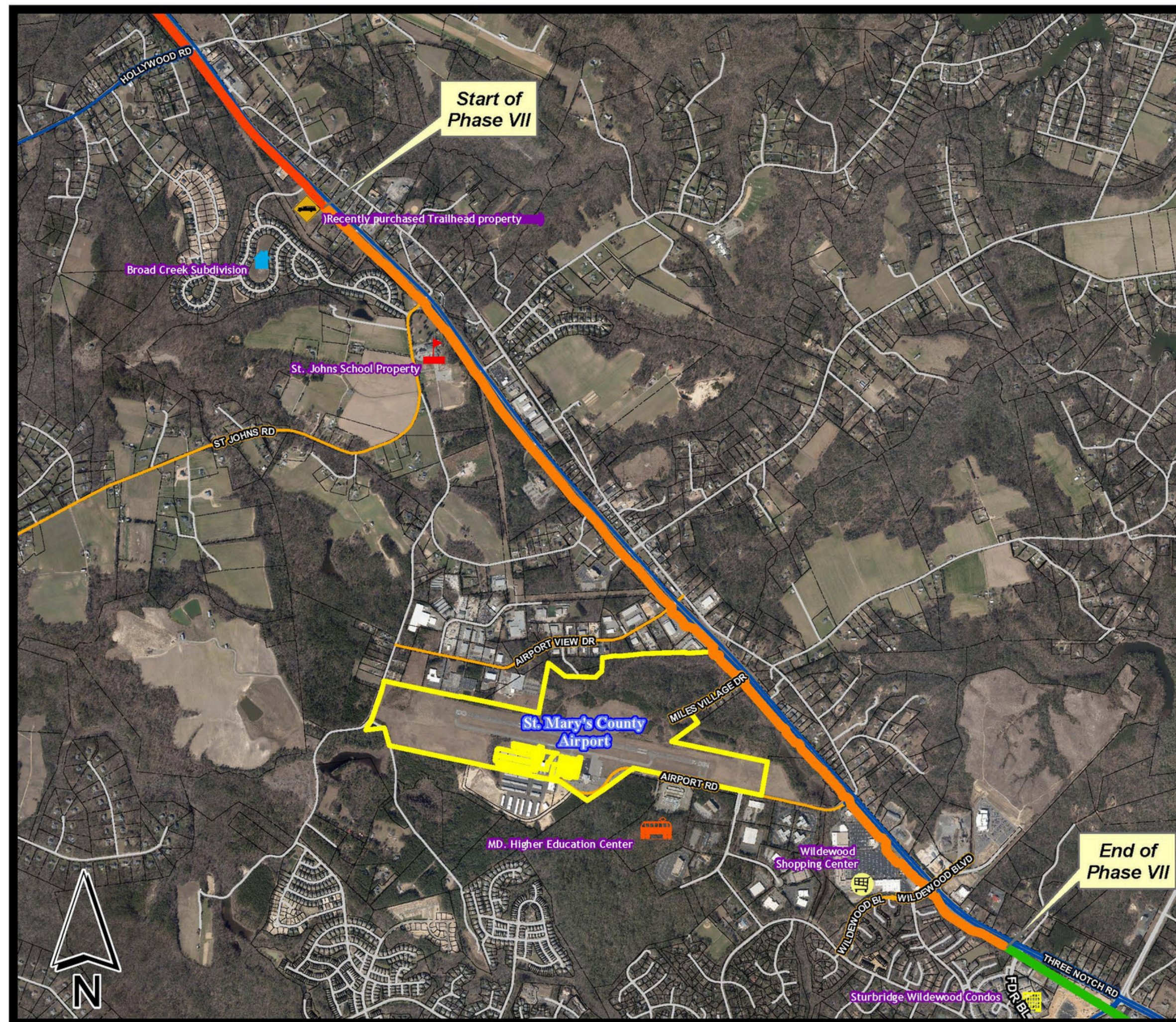






St. Mary's County, MD.

# Phase VII Section of Three Notch Trail



**Legend:**

- County Roads
- State Roads that Intersect Trail
- County Roads that Intersect Trail

**Indirect Connections to Phase VII**

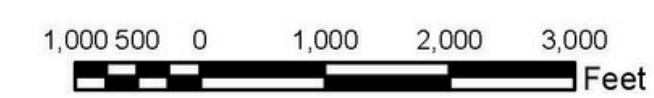
- Broad Creek Subdivision
- St. John's Church/School (43900 St Johns Rd.; Hollywood, MD 20636)
- Maryland Higher Education Center
- St. Mary's County Airport

**Direct Connections to Phase VII**

- Trailhead property 24475 Three Notch Road
- Sturbridge Wildewood Condos (23530 FDR Blvd.; California, MD 20619)
- Wildewood Shopping Center (23415 Three Notch Rd.; California, MD 20619)

**Trail Phases**

- Phase III; FDR Blvd. to Wal-Mart - Partially complete
- Phase VII; Hollywood Vol. Rescue Squad site to FDR Blvd.
- Phase VIII; Friendship School Road to Hollywood Vol. Rescue Squad





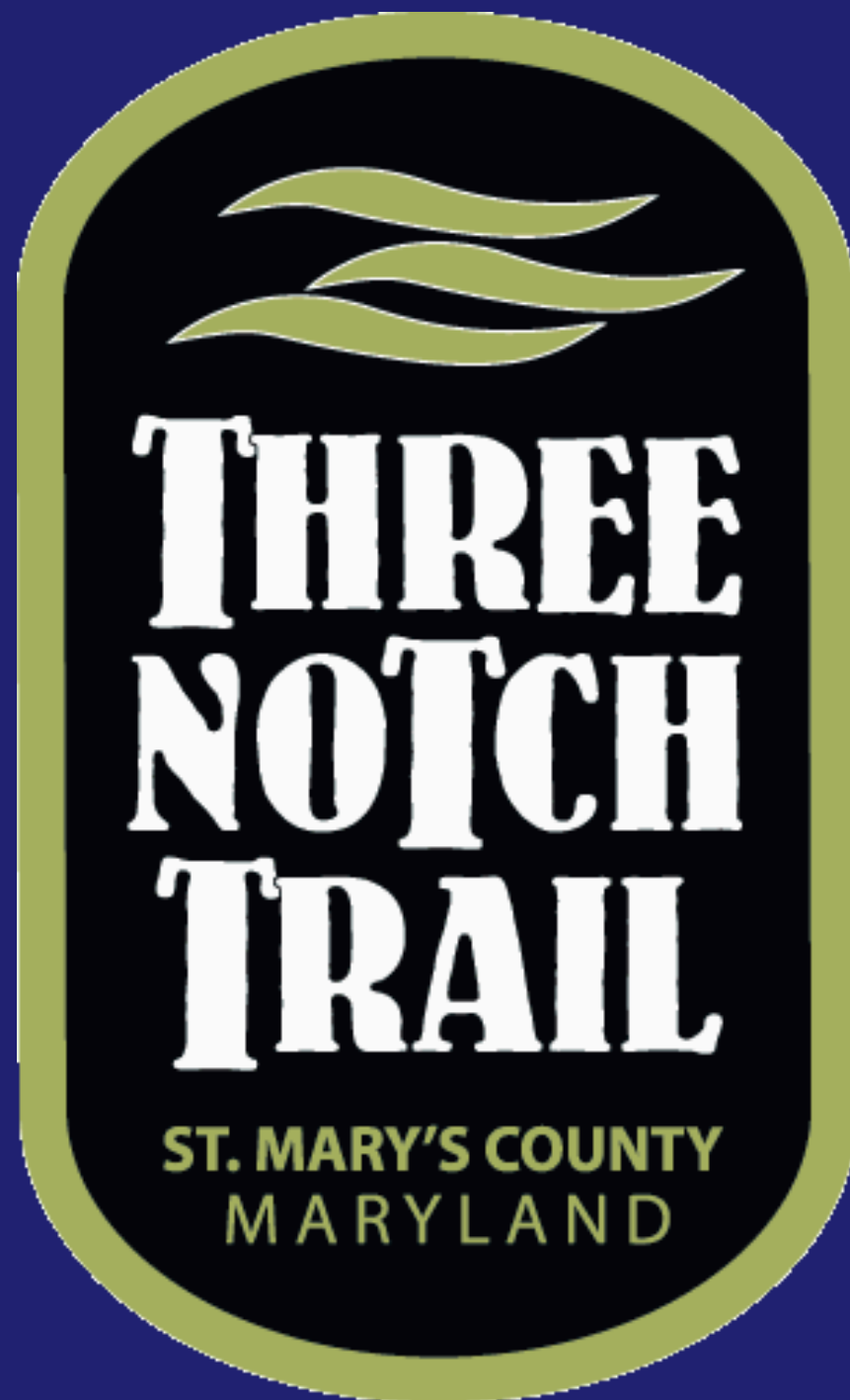
# Trail Funding

- **Transportation Alternatives Program - \$3,510,803**
- **Kim Lamphier Bikeways Network Program \$1,200,000**
- **Program Open Space- \$110,000**
- **County Funding - \$ 5,529,097**



# Project Status

- Addressing comments on design from State and local permitting agencies.
- Finalizing Right of Way (ROW)
- Completion of Public Input
- Construction bid opening - 2025



Christina Bishop, Project Manager

301-475-4200 x1811

[Christina.bishop@stmaryscountymd.gov](mailto:Christina.bishop@stmaryscountymd.gov)