

PUBLIC NOTICE

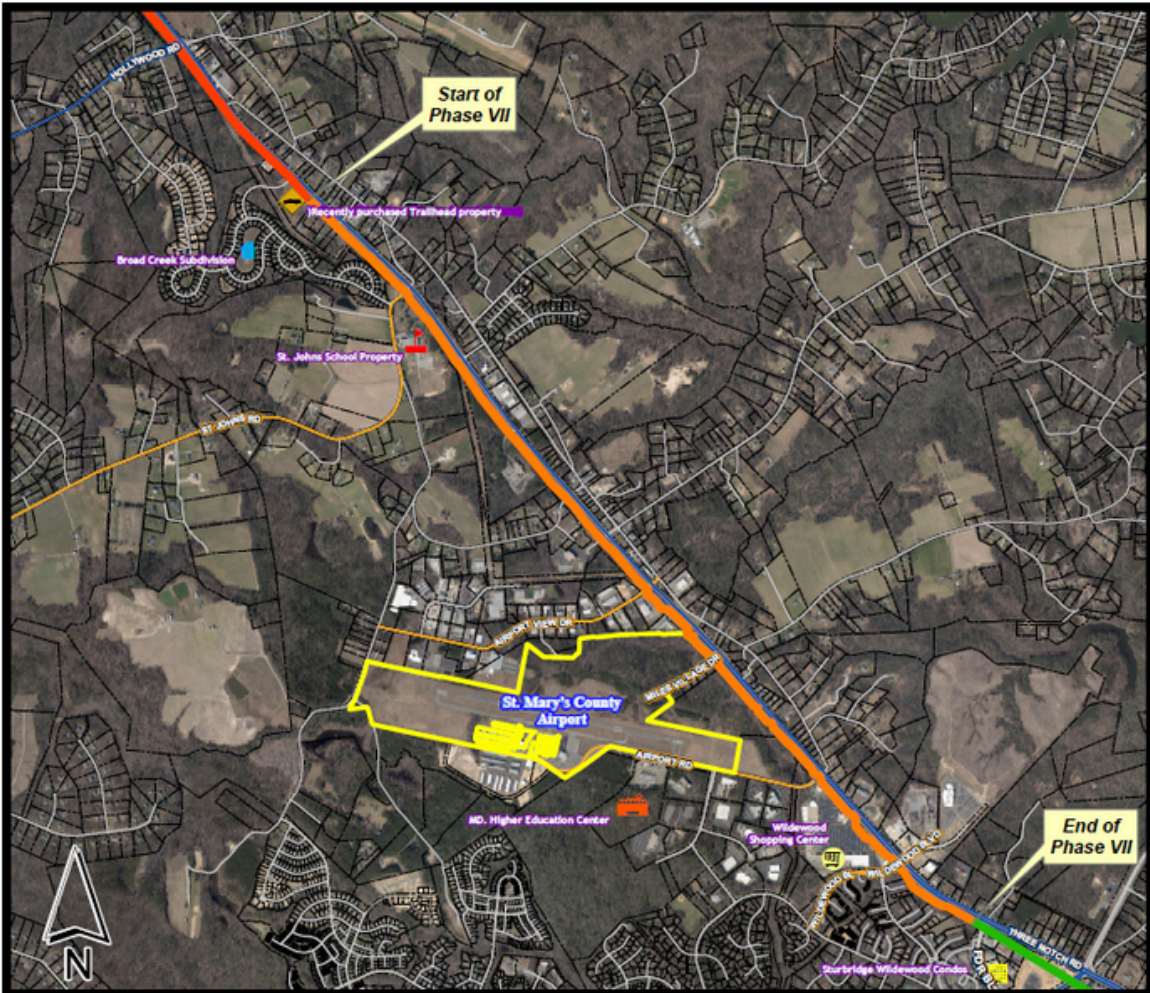
THREE NOTCH TRAIL PHASE VII

St. Mary's County Department of Recreation and Parks seeks public input for the development of Phase VII of the [Three Notch Trail](#).

The county will be utilizing a federal Transportation Alternatives grant to construct Phase VII of the trail running from FDR Blvd. in California, MD north to 24475 Three Notch Rd. Hollywood MD 20636 for approximately 3.33 miles. This project continues the development of the Three Notch Trail (TNT), a 10 ft. wide multi-use trail on the former railroad right-of-way. The TNT will enable walking, bicycling, running and roller blading. The trail will also serve as a transportation alternative from residential neighborhoods to shopping, restaurants, and businesses.

Comments or inquiries may be directed to:
 St. Mary's County Department of Recreation and Parks,
 Attn: Christina Bishop, 301-475-4200 x1811, christina.bishop@stmaryscountymd.gov

Public comments will be taken until April 11, 2025.
 Public comments will also be taken at the [April 3, 2025 Recreation & Parks board meeting](#).



St. Mary's County, MD.

Phase VII Section of Three Notch Trail

Legend:

- County Roads
- State Roads that Intersect Trail
- County Roads that Intersect Trail
- Indirect Connections to Phase VII**
 - Broad Creek Subdivision
 - St. John's Church/School (43900 St Johns Rd., Hollywood, MD 20636)
 - Maryland Higher Education Center
 - St. Mary's County Airport
- Direct Connections to Phase VII**
 - Trailhead property 34475 Three Notch Road
 - Sturbridge Widewood Condos (23530 FDR Blvd., California, MD 20619)
 - Widewood Shopping Center (23415 Three Notch Rd., California, MD 20619)
- Trail Phases**
 - Phase III: FDR Blvd. to Wai-Mart - Partially complete
 - Phase VII: Hollywood Vol. Rescue Squad site to FDR Blvd.
 - Phase VIII: Friendship School Road to Hollywood Vol. Rescue Squad

1,000 500 0 1,000 2,000 3,000 Feet