



PADDLING SCENIC WATERWAYS

RULES

- NO OVERNIGHT PARKING, CAMPING, OR OPEN FIRES AT PUBLIC LANDINGS.
- NO GLASS BOTTLES OR CONTAINERS AND NO LITTERING AT LANDINGS; PADDLERS ARE ENCOURAGED TO ADOPT THE "CARRY-IN, CARRY-OUT POLICY."
- ALWAYS LEAVE WORD WITH SOMEONE ABOUT YOUR PADDLING PLANS.
- ALWAYS CHECK THE WEATHER FORECAST BEFORE PADDLING; WEATHER CAN CHANGE SUDDENLY AND CREATE DANGEROUS CONDITIONS. CALM CONDITIONS IN SHELTERED AREAS CAN EASILY DISGUISE MORE HAZARDOUS CONDITIONS OFFSHORE.
- ALWAYS WEAR A PERSONAL FLOTATION DEVICE (PFD) OR LIFE JACKET. CARRYING A CELLULAR PHONE IS A GOOD IDEA, THOUGH SOME AREAS MAY HAVE WEAK COVERAGE. PLEASE BE AWARE THAT MOST OF THE SHORELINE IN ST. MARY'S COUNTY IS PRIVATELY OWNED AND TRESPASSING IS UNLAWFUL.

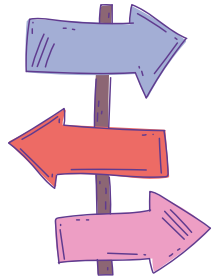
PUBLIC CANOE & KAYAK LAUNCH

St. Mary's County has 15 county-owned and operated **public landings**. Some have piers, **boat ramps** for motorized boats, and some are only suitable for canoe and kayak launching.

TRAIL GUIDES



Water Trails in Western St. Mary's County: Explore the Trails of the Tidal Potomac, includes maps and information detailing paddling routes along several water trails in the western part of the county.



Guide to Public Boating Access: View a complete listing of public water access points



SOFT LAUNCH SITES

Camp Calvert Landing: MD 5, end of Camp Calvert Road on Breton Bay in Leonardtown.

Great Mills Canoe/Kayak Launch: MD 5 in Great Mills; St. Mary's River Water Trail; pull out at MD 5 in St. Mary's City.

Paul Ellis Landing: MD 242, end of Paul Ellis Road, White's Neck Creek in Avenue.

St. George's Island Landing: MD 5, Thomas Road, St. George Creek, St. George Island.

Tall Timbers Landing: MD 5 to MD 249, end of Tall Timbers Road, Herring Creek, Tall Timbers.

McIntosh Run Launch: MD 5 in Leonardtown, next to KFC & Exxon; pull out at Camp Calvert Landing.

Leonardtown Warf Park: MD 5 to end of Washington Street in Leonardtown



PADDLING SCENIC WATERWAYS



COUNTY & STATE WATERFRONT PARKS FOR LAUNCHING & REST STOPS

Elms Beach Park: MD 235, Bay Forest Road; open water of Chesapeake Bay in Dameron. Launch or visit by water.

Myrtle Point Park: MD 4, Patuxent Boulevard; paddle Mill Creek or Patuxent River in California. Launch or visit by water.

Piney Point Lighthouse, Museum & Park: MD 5 to MD 249 Lighthouse Road in Piney Point. No launch area; paddlers may visit by water. County operated public landings are closed between sunset and sunrise.

RESOURCES

[Guide to Public Boating Access](#)

[Public Beach Water Quality Monitoring](#)

[Park & Public Landings Locator Map](#)



[Water Trails in Western St. Mary's County, MD](#)

MAINTENANCE

For questions regarding operations or maintenance at public landings, please call the Parks Division at (301) 863-6068, extension 3570.

St. Mary's County Recreation & Parks
www.stmaryscountymd.gov/recreate/parks
webtrac@stmaryscountymd.gov
301-475-4200 ext. 1800